

For Research Use Only

# SERPINE1 Recombinant antibody

Catalog Number: 85683-6-RR



## Basic Information

Catalog Number:

85683-6-RR

Concentration:

1000  $\mu$ g/ml

Source:

Rabbit

Isotype:

IgG

Immunogen Catalog Number:

EG3798

GenBank Accession Number:

BC010860

GeneID (NCBI):

5054

UNIPROT ID:

P05121

Full Name:

serpin peptidase inhibitor, clade E  
(nexin, plasminogen activator  
inhibitor type 1), member 1

Calculated MW:

402 aa, 45 kDa

Observed MW:

45 kDa

Purification Method:

Protein A purification

CloneNo.:

243115E1

Recommended Dilutions:

WB 1:1000-1:4000

## Applications

Tested Applications:

WB, ELISA

Species Specificity:

human

Positive Controls:

WB : HepG2 cells, HuH-7 cells, L02 cells, U2OS cells

## Background Information

SERPINE1, also named as Plasminogen activator inhibitor type 1 (PAI-1), is a member of the serine protease inhibitor (SERPIN) superfamily. PAI-1 is the principal inhibitor of tPA and uPA, and hence is an inhibitor of fibrinolysis. Defects in this gene are the cause of plasminogen activator inhibitor-1 deficiency (PAI-1 deficiency), and high concentrations of the gene product are associated with thrombophilia.

## Storage

Storage:

Store at -20°C. Stable for one year after shipment.

Storage Buffer:

PBS with 0.02% sodium azide and 50% glycerol, pH7.3

Aliquoting is unnecessary for -20°C storage

For technical support and original validation data for this product please contact:

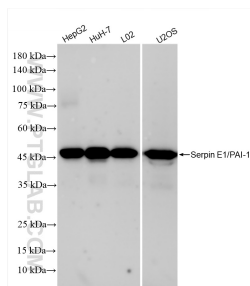
T: 4006900926

E: [Proteintech-CN@ptglab.com](mailto:Proteintech-CN@ptglab.com)

W: [ptgcn.com](http://ptgcn.com)

This product is exclusively available under Proteintech Group brand and is not available to purchase from any other manufacturer.

## Selected Validation Data



Various lysates were subjected to SDS PAGE followed by western blot with 85683-6-RR (SERPINE1 antibody) at dilution of 1:2000 incubated at room temperature for 1.5 hours.