

For Research Use Only

# SERPINE1 Recombinant antibody, PBS Only (Detector)

Catalog Number: 85683-2-PBS



## Basic Information

Catalog Number:

85683-2-PBS

Concentration:

1 mg/ml

Source:

Rabbit

Isotype:

IgG

GenBank Accession Number:

BC010860

GeneID (NCBI):

5054

UNIPROT ID:

P05121

Full Name:

serpin peptidase inhibitor, clade E  
(nexin, plasminogen activator  
inhibitor type 1), member 1

Calculated MW:

402 aa, 45 kDa

Purification Method:

Protein A purification

CloneNo.:

243115D3

## Applications

Tested Applications:

Cytometric bead array, Sandwich ELISA, Indirect ELISA,  
Sample test

Species Specificity:

human

## Background Information

### Storage

Storage:

Store at -80°C.

The product is shipped with ice packs. Upon receipt, store it immediately at -80°C

Storage Buffer:

PBS Only

For technical support and original validation data for this product please contact:

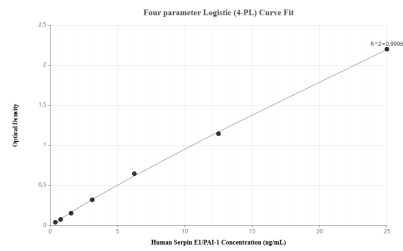
T: 4006900926

E: [Proteintech-CN@ptglab.com](mailto:Proteintech-CN@ptglab.com)

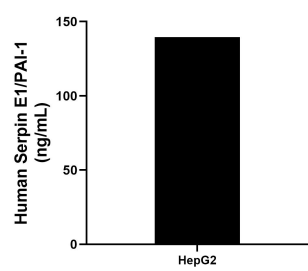
W: [ptgcn.com](http://ptgcn.com)

This product is exclusively available under Proteintech Group brand and is not available to purchase from any other manufacturer.

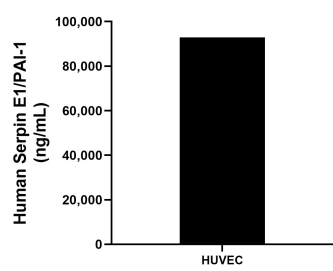
Selected Validation Data



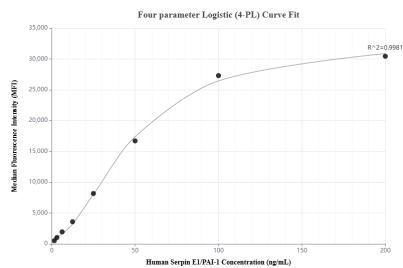
Sandwich ELISA standard curve of MP02035-3, Human Serpin E1/PAI-1 Recombinant Matched Antibody Pair - PBS only. 85683-4-PBS was coated to a plate as the capture antibody and incubated with serial dilutions of standard Eg3798. 85683-2-PBS was HRP conjugated as the detection antibody. Range: 0.391-25 ng/mL



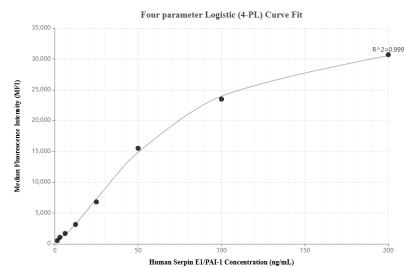
HepG2 were cultured in DMEM supplemented with 10% fetal bovine serum, 2.5 mM L-glutamine, 100 U/mL penicillin, and 100 µg/mL streptomycin sulfate. An aliquot of the cell culture supernate was removed, assayed for human Serpin E1/PAI-1, and measured 139.44 ng/mL



The mean Serpin E1/PAI-1 concentration was determined to be 92,887.56 ng/mL in HUVEC cell extract based on a 1.4 mg/mL extract load.



Cytometric bead array standard curve of MP02035-2, Serpin E1/PAI-1 Recombinant Matched Antibody Pair, PBS Only. Capture antibody: 85683-3-PBS. Detection antibody: 85683-2-PBS. Standard: Eg3798. Range: 1.563-200 ng/mL



Cytometric bead array standard curve of MP02035-1, Serpin E1/PAI-1 Recombinant Matched Antibody Pair, PBS Only. Capture antibody: 85683-1-PBS. Detection antibody: 85683-2-PBS. Standard: Eg3798. Range: 1.563-200 ng/mL