

For Research Use Only

# METTL5 Recombinant antibody

Catalog Number: 85682-5-RR



## Basic Information

Catalog Number:

85682-5-RR

Concentration:

1000 µg/ml

Source:

Rabbit

Isotype:

IgG

Immunogen Catalog Number:

AG10214

GenBank Accession Number:

BC000921

GeneID (NCBI):

29081

UNIPROT ID:

Q9NRN9

Full Name:

methyltransferase like 5

Calculated MW:

209 aa, 24 kDa

Observed MW:

24-27 kDa

Purification Method:

Protein A purification

CloneNo.:

243081C8

Recommended Dilutions:

WB 1:2000-1:10000

## Applications

Tested Applications:

WB, ELISA

Species Specificity:

human

Positive Controls:

WB : HeLa cells, HEK-293 cells, PC-3 cells, HCT 116 cells, K-562 cells

## Background Information

METTL5 is a member of the METTL family of S-adenosyl-methionine-dependent methyltransferases that adds m6A to a specific site, nucleotide A-1832 of 18S rRNA, hereafter referred to as m6A1832. METTL5 is localized in the nucleolus and cytoplasm.

## Storage

Storage:

Store at -20°C. Stable for one year after shipment.

Storage Buffer:

PBS with 0.02% sodium azide and 50% glycerol, pH7.3

Aliquoting is unnecessary for -20°C storage

For technical support and original validation data for this product please contact:

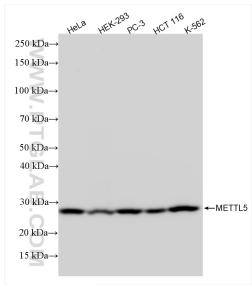
T: 4006900926

E: Proteintech-CN@ptglab.com

W: ptgcn.com

This product is exclusively available under Proteintech Group brand and is not available to purchase from any other manufacturer.

## Selected Validation Data



Various lysates were subjected to SDS PAGE followed by western blot with 85682-5-RR (METTL5 antibody) at dilution of 1:5000 incubated at room temperature for 1.5 hours.