

For Research Use Only

KTN1 Recombinant antibody, PBS Only (Detector)

Catalog Number: 85681-5-PBS



Basic Information

Catalog Number:

85681-5-PBS

Concentration:

1 mg/ml

Source:

Rabbit

Isotype:

IgG

Immunogen Catalog Number:

AG13854

GenBank Accession Number:

BC117132

GeneID (NCBI):

3895

UNIPROT ID:

Q86UP2

Full Name:

kinectin 1 (kinesin receptor)

Calculated MW:

1357 aa, 156 kDa

Purification Method:

Protein A purification

CloneNo.:

243067A12

Applications

Tested Applications:

Sandwich ELISA, Indirect ELISA, Sample test

Species Specificity:

human

Background Information

Storage

Storage:

Store at -80°C.

The product is shipped with ice packs. Upon receipt, store it immediately at -80°C

Storage Buffer:

PBS Only

For technical support and original validation data for this product please contact:

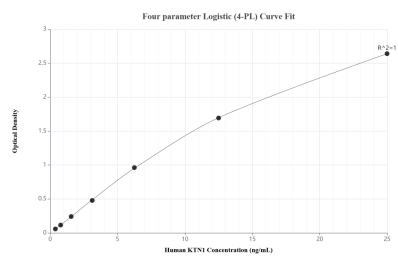
T: 4006900926

E: Proteintech-CN@ptglab.com

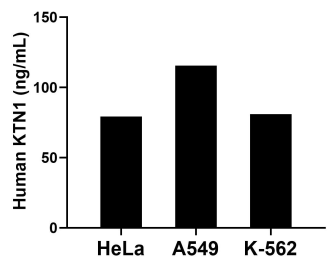
W: ptgcn.com

This product is exclusively available under Proteintech Group brand and is not available to purchase from any other manufacturer.

Selected Validation Data



Sandwich ELISA standard curve of MP02037-3, Human KTN1 Recombinant Matched Antibody Pair - PBS only. 85681-6-PBS was coated to a plate as the capture antibody and incubated with serial dilutions of standard Ag13854. 85681-5-PBS was HRP conjugated as the detection antibody. Range: 0.391-25 ng/mL



The mean KTN1 concentration was determined to be 79.20 ng/mL in HeLa cell extract based on a 1.50 mg/mL extract load, 115.52 ng/mL in A549 cell extract based on a 3.10 mg/mL extract load and 81.05 ng/mL in K-562 cell extract based on a 2.50 mg/mL extract load.