

For Research Use Only

RBPJ Recombinant antibody, PBS Only

Catalog Number: 85676-3-PBS



Basic Information

Catalog Number:

85676-3-PBS

Concentration:

1 mg/ml

Source:

Rabbit

Isotype:

IgG

Immunogen Catalog Number:

AG32552

GenBank Accession Number:

BC064976

GeneID (NCBI):

3516

UNIPROT ID:

Q06330

Full Name:

recombination signal binding protein
for immunoglobulin kappa J region

Calculated MW:

56 kDa

Observed MW:

~60 kDa

Purification Method:

Protein A purification

CloneNo.:

243044G4

Applications

Tested Applications:

WB, Indirect ELISA

Species Specificity:

human, rat

Background Information

RBPJ, also named as IGKJRB, IGKJRB1, RBPJK, RBPSUH, NY-REN-30, CBF-1 and CSL, belongs to the Su(H) family. It is a transcriptional regulator that plays a central role in Notch signaling, a signaling pathway involved in cell-cell communication that regulates a broad spectrum of cell-fate determinations. RBPJ acts as a transcriptional repressor when it is not associated with Notch proteins. It is specifically binds to the immunoglobulin kappa-type J segment recombination signal sequence. RBPJ binds to the Runx3 promoter in the atrioventricular canal in vivo, and inhibition of Notch reduces RUNX3 expression in the cardiac cushion of embryonic hearts.

Storage

Storage:

Store at -80°C.

The product is shipped with ice packs. Upon receipt, store it immediately at -80°C

Storage Buffer:

PBS only, pH7.3

For technical support and original validation data for this product please contact:

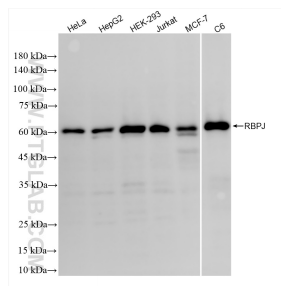
T: 4006900926

E: Proteintech-CN@ptglab.com

W: ptgcn.com

This product is exclusively available under Proteintech Group brand and is not available to purchase from any other manufacturer.

Selected Validation Data



Various lysates were subjected to SDS PAGE followed by western blot with 85676-3-RR (RBPJ antibody) at dilution of 1:5000 incubated at room temperature for 1.5 hours. This data was developed using the same antibody clone with 85676-3-PBS in a different storage buffer formulation.