

KIF23 Recombinant monoclonal antibody

Catalog Number: 85675-5-RR

Basic Information

Catalog Number:

85675-5-RR

Source:

Rabbit

Isotype:

IgG

Immunogen Catalog Number:

AG29346

GenBank Accession Number:

NM_138555

GeneID (NCBI):

9493

UNIPROT ID:

Q02241

Full Name:

kinesin family member 23

Calculated MW:

110 kDa

Purification Method:

Protein A purification

CloneNo.:

243084E3

Recommended Dilutions:

IHC: 1:500-1:2000

IF/ICC: 1:500-1:2000

FC (Intra): 0.25 ug per 10⁶ cells in a 100 µl suspension

Applications

Tested Applications:

IHC, IF/ICC, FC (Intra), ELISA

Species Specificity:

human

Note-IHC: suggested antigen retrieval with TE buffer pH 9.0; (*) Alternatively, antigen retrieval may be performed with citrate buffer pH 6.0

Positive Controls:

IHC : human stomach cancer tissue,

IF/ICC : HepG2 cells,

FC (Intra) : HepG2 cells,

Background Information

KIF23, also known as KNSL5 and MKLP1, is a member of the kinesin-like protein family. It plays a crucial role in cytokinesis, the final stage of cell division. It is involved in the formation of the central spindle, which is essential for the proper separation of the cytoplasm and the formation of the cleavage furrow. KIF23 is also involved in the organization and transport of intracellular vesicles and organelles. Mutations in KIF23 have been associated with congenital dyserythropoietic anemia type III (PMID: 23570799).

Storage

Storage:

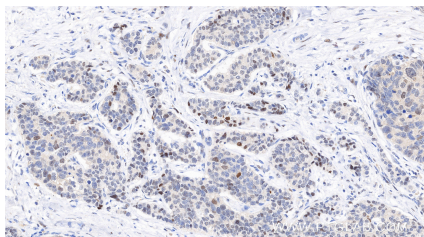
Store at -20°C. Stable for one year after shipment.

Storage Buffer:

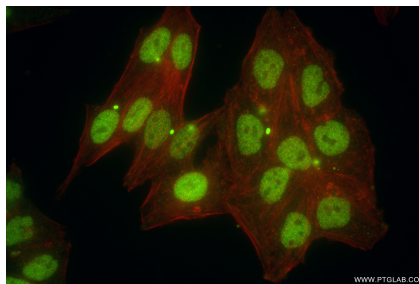
PBS with 0.02% sodium azide and 50% glycerol, pH7.3

Aliquoting is unnecessary for -20°C storage

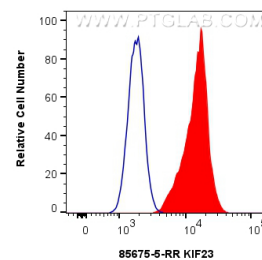
Selected Validation Data



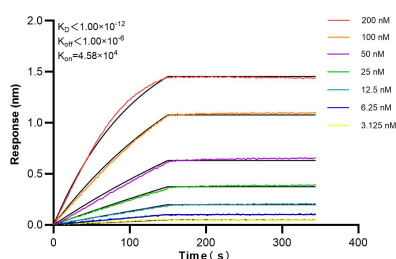
Immunohistochemical analysis of paraffin-embedded human stomach cancer tissue slide using 85675-5-RR (KIF23 antibody) at dilution of 1:1000 (under 20x lens). Heat mediated antigen retrieval with Tris-EDTA buffer (pH 9.0).



Immunofluorescent analysis of (4% PFA) fixed HepG2 cells using KIF23 antibody (85675-5-RR, Clone: 243084E3) at dilution of 1:1000 and CoraLite®488-Conjugated Goat Anti-Rabbit IgG(H+L) (SA00013-2), CL594-Phalloidin (red).



1x10⁶ HepG2 cells were intracellularly stained with 0.25 ug KIF23 Recombinant monoclonal antibody (85675-5-RR, Clone:243084E3) and CoraLite®488-Conjugated Goat Anti-Rabbit IgG(H+L) (SA00013-2)(red), or 0.25 ug Rabbit IgG Isotype Control RecAb (98136-1-RR, Clone: 240953C9) (blue). Cells were fixed and permeabilized with Transcription Factor Staining Buffer Kit (PF00011).



Biolayer interferometry (BLI) kinetic assays of 85675-5-RR against Human KIF23 were performed. The affinity constant is below 1 pM.