

For Research Use Only

RBM24 Recombinant antibody, PBS Only

Catalog Number: 85674-1-PBS



Basic Information

Catalog Number: 85674-1-PBS	GenBank Accession Number: BC104808	Purification Method: Protein A purification
Concentration: 1 mg/ml	GeneID (NCBI): 221662	CloneNo.: 243006A11
Source: Rabbit	UNIPROT ID: Q9BX46	
Isotype: IgG	Full Name: RNA binding motif protein 24	
Immunogen Catalog Number: AG12871	Calculated MW: 191 aa, 20 kDa	
	Observed MW: 20 kDa	

Applications

Tested Applications:
WB, Indirect ELISA

Species Specificity:
human, mouse

Background Information

RNA-binding proteins have a pivotal role in post-transcriptionally regulating gene expression. During early development, they exhibit temporally and spatially regulated expression patterns and affect the proteome of a single cell by controlling alternative splicing, transport, localization, and stability of their target RNAs (PMID: 22510371). Their expression is tissue-specific, and their crucial influence on the protein setup, especially in muscle cells, has become recognized recently (PMID: 21982546). RBM24 is one RNA-binding protein that is fundamental in regulating cardiac gene expression, sarcomeric assembly, and cardiac contractility. It may thus represent a novel pathway to cardiomyopathy (PMID: 20338237).

Storage

Storage:
Store at -80°C.
The product is shipped with ice packs. Upon receipt, store it immediately at -80°C

Storage Buffer:
PBS only

For technical support and original validation data for this product please contact:

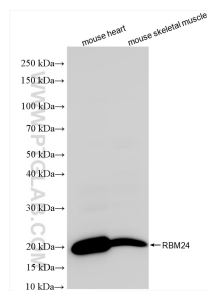
T: 4006900926

E: Proteintech-CN@ptglab.com

W: ptgcn.com

This product is exclusively available under Proteintech Group brand and is not available to purchase from any other manufacturer.

Selected Validation Data



Various lysates were subjected to SDS PAGE followed by western blot with 85674-1-RR (RBM24 antibody) at dilution of 1:5000 incubated at room temperature for 1.5 hours. This data was developed using the same antibody clone with 85674-1-PBS in a different storage buffer formulation.