

For Research Use Only

Rat IL-1RA/IL-1RN Recombinant antibody, PBS Only (Capture/Detector)

Catalog Number: 85672-3-PBS



Basic Information

Catalog Number:	85672-3-PBS	GenBank Accession Number:	NM_022194.2	Purification Method:	Protein A purification
Concentration:	1 mg/ml	GeneID (NCBI):	60582	CloneNo.:	242317D2
Source:	Rabbit	UNIPROT ID:	P25086		
Isotype:	IgG	Full Name:	interleukin 1 receptor antagonist		
Immunogen Catalog Number:	EG3206	Calculated MW:	20 kDa		
		Observed MW:	18-20 kDa		

Applications

Tested Applications:
WB, IHC, Cytometric bead array, Indirect ELISA

Species Specificity:
human, mouse, rat

Background Information

Interleukin-1 receptor antagonist (IL-1RA) is a critical member of the IL-1 family of cytokines, which plays a significant role in modulating inflammatory responses. IL-1RA exists in two main forms: a secreted form (sIL-1Ra) and an intracellular form (icIL-1Ra). The secreted form is produced by various cells including monocytes, macrophages, neutrophils, and other cells, while the intracellular form is found in keratinocytes and other epithelial cells, as well as in monocytes and fibroblasts. IL-1RA is important in host defense against endotoxin-induced injury and is produced in numerous experimental animal models of disease, as well as in human autoimmune and chronic inflammatory diseases. It acts as an anti-inflammatory agent by maintaining the balance between pro-inflammatory IL-1 α / β and its own anti-inflammatory effects.

Storage

Storage:
Store at -80°C.
The product is shipped with ice packs. Upon receipt, store it immediately at -80°C

Storage Buffer:
PBS only, pH7.3

For technical support and original validation data for this product please contact:

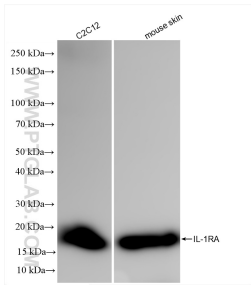
T: 4006900926

E: Proteintech-CN@ptglab.com

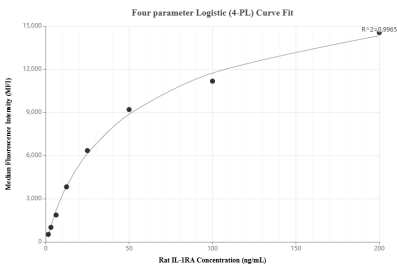
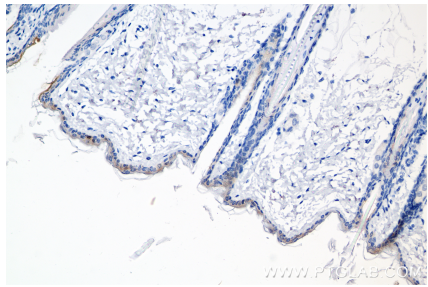
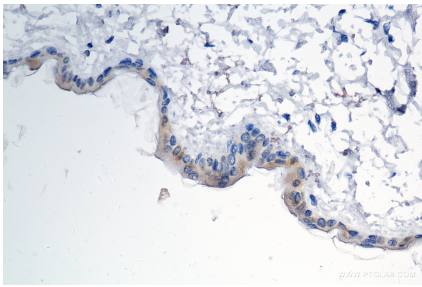
W: ptgcn.com

This product is exclusively available under Proteintech Group brand and is not available to purchase from any other manufacturer.

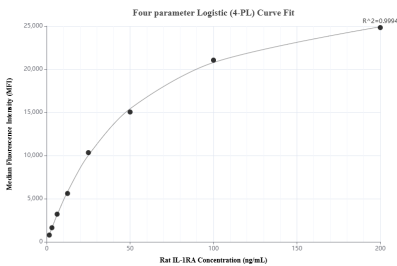
Selected Validation Data



Various lysates were subjected to SDS PAGE followed by western blot with 85672-3-RR (IL-1RA/IL-1RN antibody) at dilution of 1:1000 incubated at room temperature for 1.5 hours. This data was developed using the same antibody clone with 85672-3-PBS in a different storage buffer formulation.



Cytometric bead array standard curve of MP02044-2, RAT IL-1RA Recombinant Matched Antibody Pair, PBS Only. Capture antibody: 85672-3-PBS. Detection antibody: 85672-2-PBS. Standard: Eg3206. Range: 1.563-200 ng/mL.



Cytometric bead array standard curve of MP02044-1, RAT IL-1RA Recombinant Matched Antibody Pair, PBS Only. Capture antibody: 85672-1-PBS. Detection antibody: 85672-3-PBS. Standard: Eg3206. Range: 1.563-200 ng/mL.