

IL-15RA Recombinant antibody

Catalog Number: 85671-2-RR

Basic Information

Catalog Number:

85671-2-RR

Concentration:

1000 µg/ml

Source:

Rabbit

Isotype:

IgG

Immunogen Catalog Number:

EG2687

GenBank Accession Number:

NM_008358.2

GeneID (NCBI):

16169

UNIPROT ID:

Q60819-1

Full Name:

interleukin 15 receptor, alpha chain

Calculated MW:

28 kDa

Observed MW:

60 kDa

Purification Method:

Protein A purification

CloneNo.:

242618H6

Recommended Dilutions:

WB 1:5000-1:50000

Applications

Tested Applications:

WB, ELISA

Species Specificity:

mouse, rat

Positive Controls:WB : mouse small intestine tissue, mouse liver tissue,
rat liver tissue, mouse colon tissue

Background Information

Interleukin-15 (IL-15) is a pleiotropic cytokine that plays an important role in both innate and adaptive immunity. IL-15 is mainly produced by activated monocytes, macrophages and dendritic cells, and is structurally similar to IL-2 (PMID: 8178155; 12401478). These two cytokines share the same IL-2/15R β and common γ -chain receptor subunits. In addition, IL-2 and IL-15 have their own private α -chain receptor subunit, IL-2R α and IL-15R α , respectively (PMID: 7641685). The IL-15R α chain is expressed by many cell types including monocytes, DCs, NK, T cells and fibroblasts. Several isoforms of IL-15R α exist and are generated either by alternative splicing or by proteolytic cleavage (PMID: 10480910; 15265897). The calculated molecular weight of full-length IL-15R α is 28 kDa, IL-15R α can be glycosylated, and larger apparent molecular weights of 55-65 kDa have been reported by some researches (PMID: 10480910; 15976182; 15671076; 17912462).

Storage

Storage:

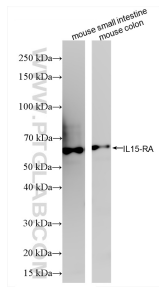
Store at -20°C. Stable for one year after shipment.

Storage Buffer:

PBS with 0.02% sodium azide and 50% glycerol, pH7.3

Aliquoting is unnecessary for -20°C storage

Selected Validation Data



Various lysates were subjected to SDS PAGE followed by western blot with 85671-2-RR (IL15ra antibody) at dilution of 1:10000 incubated at room temperature for 1.5 hours.