

For Research Use Only

Mouse IL-15RA Recombinant antibody, PBS Only (Detector)

Catalog Number: 85671-2-PBS



Basic Information

Catalog Number: 85671-2-PBS	GenBank Accession Number: NM_008358.2	Purification Method: Protein A purification
Concentration: 1 mg/ml	GeneID (NCBI): 16169	CloneNo.: 242618H6
Source: Rabbit	UNIPROT ID: Q60819-1	
Isotype: IgG	Full Name: interleukin 15 receptor, alpha chain	
Immunogen Catalog Number: EG2687	Calculated MW: 28 kDa	
	Observed MW: 60 kDa	

Applications

Tested Applications:
WB, Cytometric bead array, Sandwich ELISA, Indirect ELISA, Sample test

Species Specificity:
mouse, rat

Background Information

Interleukin-15 (IL-15) is a pleiotropic cytokine that plays an important role in both innate and adaptive immunity. IL-15 is mainly produced by activated monocytes, macrophages and dendritic cells, and is structurally similar to IL-2 (PMID: 8178155; 12401478). These two cytokines share the same IL-2/15R β and common γ -chain receptor subunits. In addition, IL-2 and IL-15 have their own private α -chain receptor subunit, IL-2R α and IL-15R α , respectively (PMID: 7641685). The IL-15R α chain is expressed by many cell types including monocytes, DCs, NK, T cells and fibroblasts. Several isoforms of IL-15R α exist and are generated either by alternative splicing or by proteolytic cleavage (PMID: 10480910; 15265897). The calculated molecular weight of full-length IL-15R α is 28 kDa, IL-15R α can be glycosylated, and larger apparent molecular weights of 55-65 kDa have been reported by some researches (PMID: 10480910; 15976182; 15671076; 17912462).

Storage

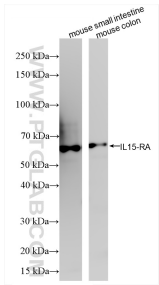
Storage:
Store at -80°C.
The product is shipped with ice packs. Upon receipt, store it immediately at -80°C

Storage Buffer:
PBS only, pH7.3

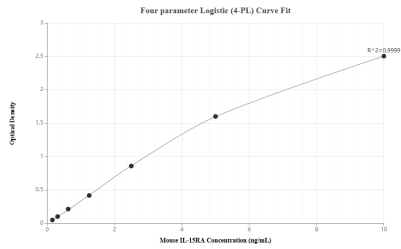
For technical support and original validation data for this product please contact:
T: 4006900926 E: Proteintech-CN@ptglab.com W: ptgcn.com

This product is exclusively available under Proteintech Group brand and is not available to purchase from any other manufacturer.

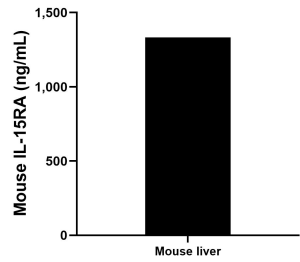
Selected Validation Data



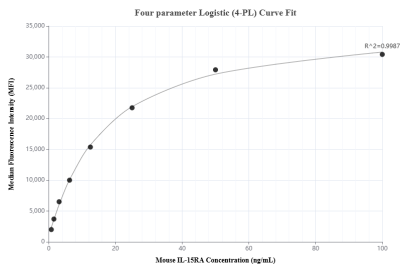
Various lysates were subjected to SDS PAGE followed by western blot with 85671-2-RR (IL15ra antibody) at dilution of 1:10000 incubated at room temperature for 1.5 hours. This data was developed using the same antibody clone with 85671-2-PBS in a different storage buffer formulation.



Sandwich ELISA standard curve of MP02016-3, Mouse IL-15RA Recombinant Matched Antibody Pair - PBS only. 85671-4-PBS was coated to a plate as the capture antibody and incubated with serial dilutions of standard Eg2687. 85671-2-PBS was HRP conjugated as the detection antibody. Range: 0.156-10 ng/mL



The mean IL-15RA concentration was determined to be 1,332.06 ng/mL in mouse liver tissue extract based on a 3.7 mg/mL extract load.



Cytometric bead array standard curve of MP02016-1, MOUSE IL-15RA Recombinant Matched Antibody Pair, PBS Only. Capture antibody: 98406-2-PBS. Detection antibody: 85671-2-PBS. Standard: Eg2687. Range: 0.781-100 ng/mL