

For Research Use Only

SKP2 Recombinant antibody, PBS Only (Capture)

Catalog Number: 85670-7-PBS



Basic Information

Catalog Number:

85670-7-PBS

Concentration:

1 mg/ml

Source:

Rabbit

Isotype:

IgG

Immunogen Catalog Number:

AG6826

GenBank Accession Number:

BC001441

GeneID (NCBI):

6502

UNIPROT ID:

Q13309

Full Name:

S-phase kinase-associated protein 2 (p45)

Calculated MW:

48 kDa

Purification Method:

Protein A purification

CloneNo.:

243080C10

Applications

Tested Applications:

Sandwich ELISA, Indirect ELISA, Sample test

Species Specificity:

human

Background Information

Storage

Storage:

Store at -80°C.

The product is shipped with ice packs. Upon receipt, store it immediately at -80°C

Storage Buffer:

PBS Only

For technical support and original validation data for this product please contact:

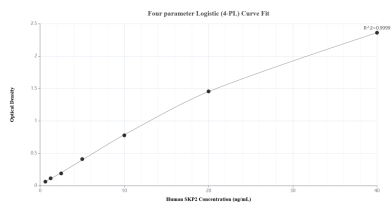
T: 4006900926

E: Proteintech-CN@ptglab.com

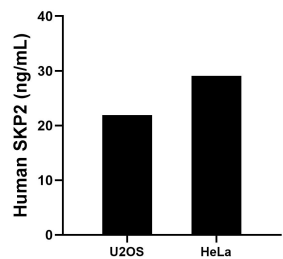
W: ptgcn.com

This product is exclusively available under Proteintech Group brand and is not available to purchase from any other manufacturer.

Selected Validation Data



Sandwich ELISA standard curve of MP02007-3, Human SKP2 Recombinant Matched Antibody Pair - PBS only. 85670-7-PBS was coated to a plate as the capture antibody and incubated with serial dilutions of standard Ag6826. 85670-6-PBS was HRP conjugated as the detection antibody. Range: 0.625-40 ng/mL



The mean SKP2 concentration was determined to be 21.92 ng/mL in U2OS cell extract based on a 1.40 mg/mL extract load and 29.08 ng/mL in HeLa cell extract based on a 1.80 mg/mL extract load.