

For Research Use Only

# Mouse IL-12 R beta 1 Recombinant antibody, PBS Only (Detector)

Catalog Number: 85661-3-PBS



## Basic Information

Catalog Number:

85661-3-PBS

Concentration:

1 mg/ml

Source:

Rabbit

Isotype:

IgG

GenBank Accession Number:

NM\_008353.2

GeneID (NCBI):

16161

UNIPROT ID:

Q60837

Full Name:

interleukin 12 receptor, beta 1

Calculated MW:

82 kDa

Purification Method:

Protein A purification

CloneNo.:

243021F7

## Applications

Tested Applications:

Cytometric bead array, Sandwich ELISA, Indirect ELISA, Sample test

Species Specificity:

mouse

## Background Information

### Storage

Storage:

Store at -80°C.

The product is shipped with ice packs. Upon receipt, store it immediately at -80°C

Storage Buffer:

PBS Only

For technical support and original validation data for this product please contact:

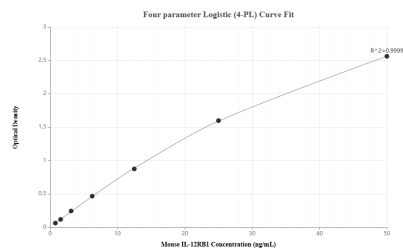
T: 4006900926

E: [Proteintech-CN@ptglab.com](mailto:Proteintech-CN@ptglab.com)

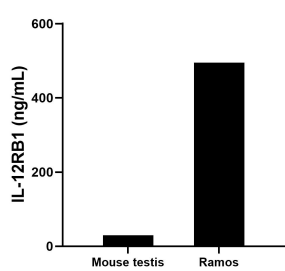
W: [ptgcn.com](http://ptgcn.com)

This product is exclusively available under Proteintech Group brand and is not available to purchase from any other manufacturer.

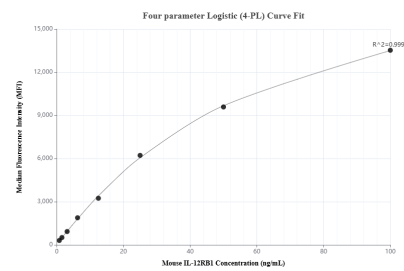
## Selected Validation Data



Sandwich ELISA standard curve of MP02048-1, Mouse IL-12RB1 Recombinant Matched Antibody Pair - PBS only. 85661-4-PBS was coated to a plate as the capture antibody and incubated with serial dilutions of standard Eg3196. 85661-3-PBS was HRP conjugated as the detection antibody. Range: 0.781-50 ng/mL



The mean IL-12RB1 concentration was determined to be 29.82 ng/mL in mouse testis tissue extract based on a 1.1 mg/mL extract load and 495.17 ng/mL in Ramos cell extract based on a 1.4 mg/mL extract load.



Cytometric bead array standard curve of MP02048-1, MOUSE IL-12RB1 Recombinant Matched Antibody Pair, PBS Only. Capture antibody: 85661-4-PBS. Detection antibody: 85661-3-PBS. Standard: Eg3196. Range: 0.781-100 ng/mL