

For Research Use Only

# Mouse Complement Component C5a Recombinant antibody, PBS Only (Detector)

Catalog Number: 85659-3-PBS



## Basic Information

Catalog Number:

85659-3-PBS

Concentration:

1 mg/ml

Source:

Rabbit

Isotype:

IgG

GenBank Accession Number:

NM\_010406.2

GeneID (NCBI):

15139

UNIPROT ID:

P06684

Full Name:

hemolytic complement

Calculated MW:

189kDa

Purification Method:

Protein A purification

CloneNo.:

242757A3

## Applications

Tested Applications:

Cytometric bead array, Sandwich ELISA, Indirect ELISA,  
Sample test

Species Specificity:

mouse

## Background Information

### Storage

Storage:

Store at -80°C.

**The product is shipped with ice packs. Upon receipt, store it immediately at -80°C**

Storage Buffer:

PBS Only

For technical support and original validation data for this product please contact:

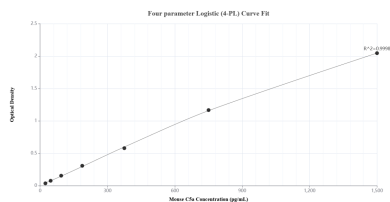
T: 4006900926

E: Proteintech-CN@ptglab.com

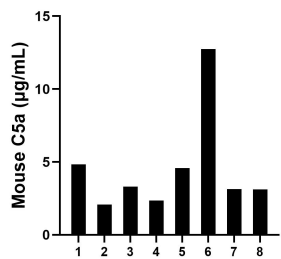
W: ptgcn.com

**This product is exclusively available under Proteintech Group brand and is not available to purchase from any other manufacturer.**

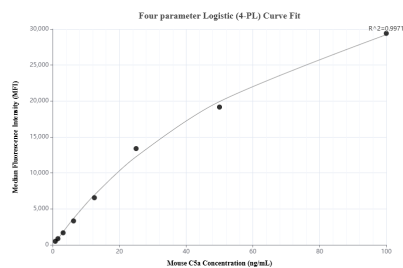
## Selected Validation Data



Sandwich ELISA standard curve of MP02047-2, Mouse C5a Recombinant Matched Antibody Pair - PBS only. 85659-4-PBS was coated to a plate as the capture antibody and incubated with serial dilutions of standard Eg3332. 85659-3-PBS was HRP conjugated as the detection antibody. Range: 23.4-1500 pg/mL



Serum of eight mice was measured. The C5a concentration of detected samples was determined to be 4.5 µg/mL with a range of 2.1-12.8 µg/mL



Cytometric bead array standard curve of MP02047-2, MOUSE C5a Recombinant Matched Antibody Pair, PBS Only. Capture antibody: 85659-4-PBS. Detection antibody: 85659-3-PBS. Standard: Eg3332. Range: 0.781-100 ng/mL