

For Research Use Only

SCGB2A2 Recombinant antibody, PBS Only (Capture)

Catalog Number: 85657-3-PBS



Basic Information

Catalog Number:

85657-3-PBS

Concentration:

1 mg/ml

Source:

Rabbit

Isotype:

IgG

GenBank Accession Number:

NM_002411.3

GeneID (NCBI):

4250

UNIPROT ID:

Q13296-1

Full Name:

secretoglobin, family 2A, member 2

Calculated MW:

10 kDa

Purification Method:

Protein A purification

CloneNo.:

243101A9

Applications

Tested Applications:

Cytometric bead array, Sandwich ELISA, Indirect ELISA,
Sample test

Species Specificity:

human

Background Information

Storage

Storage:

Store at -80°C.

The product is shipped with ice packs. Upon receipt, store it immediately at -80°C

Storage Buffer:

PBS Only

For technical support and original validation data for this product please contact:

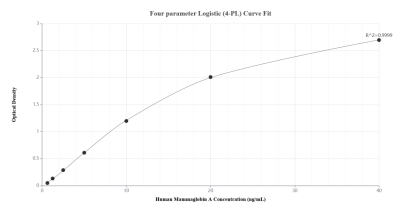
T: 4006900926

E: Proteintech-CN@ptglab.com

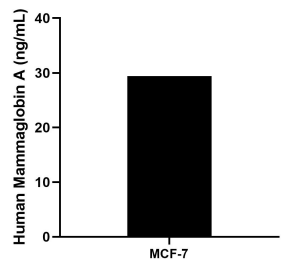
W: ptgcn.com

This product is exclusively available under Proteintech Group brand and is not available to purchase from any other manufacturer.

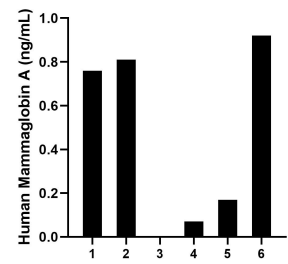
Selected Validation Data



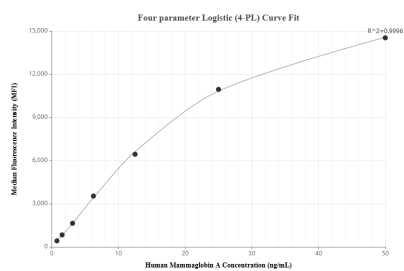
Sandwich ELISA standard curve of MP02024-3, Human Mammaglobin A Recombinant Matched Antibody Pair - PBS only. 85657-3-PBS was coated to a plate as the capture antibody and incubated with serial dilutions of standard Eg2887. 85657-4-PBS was HRP conjugated as the detection antibody. Range: 0.625-40 ng/mL.



The mean Mammaglobin A concentration was determined to be 29.40 ng/mL in MCF-7 cell extract based on a 3.50 mg/mL extract load.



Serum of six individual healthy human donors was measured. The Mammaglobin A concentration of detected samples was determined to be 0.46 ng/mL with a range of ND-0.92 ng/mL.



Cytometric bead array standard curve of MP02024-2, Mammaglobin A Recombinant Matched Antibody Pair, PBS Only. Capture antibody: 85657-3-PBS. Detection antibody: 85657-2-PBS. Standard: Eg2887. Range: 0.781-50 ng/mL.