

For Research Use Only

SNRPA1 Recombinant antibody, PBS Only (Capture)

Catalog Number: 85649-4-PBS



Basic Information

Catalog Number: 85649-4-PBS	GenBank Accession Number: BC022816	Purification Method: Protein A purification
Concentration: 1 mg/ml	GeneID (NCBI): 6627	CloneNo.: 243097D1
Source: Rabbit	UNIPROT ID: P09661	
Isotype: IgG	Full Name: small nuclear ribonucleoprotein polypeptide A'	
Immunogen Catalog Number: AG10790	Calculated MW: 255 aa, 28 kDa	

Applications

Tested Applications:
Cytometric bead array, Sandwich ELISA, Indirect ELISA, Sample test

Species Specificity:
human

Background Information

Storage

Storage:
Store at -80°C.
The product is shipped with ice packs. Upon receipt, store it immediately at -80°C

Storage Buffer:
PBS only, pH7.3

For technical support and original validation data for this product please contact:

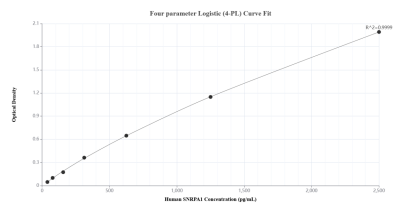
T: 4006900926

E: Proteintech-CN@ptglab.com

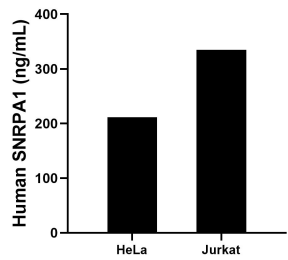
W: ptgcn.com

This product is exclusively available under Proteintech Group brand and is not available to purchase from any other manufacturer.

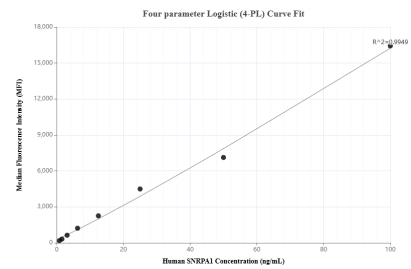
Selected Validation Data



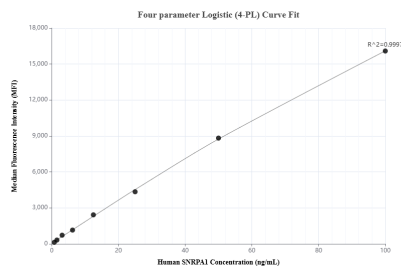
Sandwich ELISA standard curve of MP02027-3, Human SNRPA1 Recombinant Matched Antibody Pair - PBS only. 85649-4-PBS was coated to a plate as the capture antibody and incubated with serial dilutions of standard Ag10790. 85649-5-PBS was HRP conjugated as the detection antibody. Range: 39.1-2500 pg/mL



The mean SNRPA1 concentration was determined to be 211.7 ng/mL in HeLa cell extract based on a 2.1 mg/mL extract load and 334.5 ng/mL in Jurkat cell extract based on a 1.9 mg/mL extract load.



Cytometric bead array standard curve of MP02027-1, SNRPA1 Recombinant Matched Antibody Pair, PBS Only. Capture antibody: 85649-4-PBS. Detection antibody: 85649-3-PBS. Standard: Ag10790. Range: 0.781-100 ng/mL



Cytometric bead array standard curve of MP02027-2, SNRPA1 Recombinant Matched Antibody Pair, PBS Only. Capture antibody: 85649-4-PBS. Detection antibody: 85649-1-PBS. Standard: Ag10790. Range: 0.781-100 ng/mL