

For Research Use Only

PAK2 Recombinant antibody, PBS Only

Catalog Number: 85646-2-PBS



Basic Information

Catalog Number: 85646-2-PBS	GenBank Accession Number: NM_002577	Purification Method: Protein A purification
Concentration: 1 mg/ml	GeneID (NCBI): 5062	CloneNo.: 243124G9
Source: Rabbit	UNIPROT ID: Q13177	
Isotype: IgG	Full Name: p21 protein (Cdc42/Rac)-activated kinase 2	
	Calculated MW: 58 kDa	
	Observed MW: 54 kDa	

Applications

Tested Applications:
WB, Indirect ELISA

Species Specificity:
human

Background Information

PAK2, also named as PAK65, PAKgamma, p58, PAK-2p27, PAK-2p24 and C-t-PAK2, belongs to the protein kinase superfamily, STE Ser/Thr protein kinase family and STE20 subfamily. Full length PAK 2 stimulates cell survival and cell growth. The process is, at least in part, mediated by phosphorylation and inhibition of pro-apoptotic BAD. PAK2 has several isoforms with the MW of 54-62 kDa and 41 kDa. The 62 kDa PAK2 is cleaved into a 34 kDa C terminal fragment and a 28 kDa N terminal fragment with a time course that parallels apoptotic death in Jurkat cells. (PMID:10200518). Caspase-activated PAK-2p34 is involved in cell death response, probably involving the JNK signaling pathway. Cleaved PAK-2p34 seems to have a higher activity than the CDC42-activated form.

Storage

Storage:
Store at -80°C.
The product is shipped with ice packs. Upon receipt, store it immediately at -80°C

Storage Buffer:
PBS only, pH7.3

For technical support and original validation data for this product please contact:

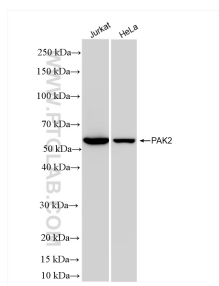
T: 4006900926

E: Proteintech-CN@ptglab.com

W: ptgcn.com

This product is exclusively available under Proteintech Group brand and is not available to purchase from any other manufacturer.

Selected Validation Data



Various lysates were subjected to SDS PAGE followed by western blot with 85646-2-RR (PAK2 antibody) at dilution of 1:3000 incubated at room temperature for 1.5 hours. This data was developed using the same antibody clone with 85646-2-PBS in a different storage buffer formulation.