

For Research Use Only

Complement factor D Recombinant antibody

Catalog Number: 85643-4-RR



Basic Information

Catalog Number: 85643-4-RR	GenBank Accession Number: NM_013459.4	Purification Method: Protein A purification
Concentration: 1000 µg/ml	GeneID (NCBI): 11537	CloneNo.: 242744B4
Source: Rabbit	UNIPROT ID: P03953-1	Recommended Dilutions: WB 1:2000-1:10000
Isotype: IgG	Full Name: complement factor D (adipsin)	
	Calculated MW: 28 kDa	
	Observed MW: 40-50 kDa	

Applications

Tested Applications: WB, ELISA	Positive Controls: WB : mouse adipose tissue, mouse serum
Species Specificity: mouse	

Background Information

Complement factor D, also known as adipsin, is a highly specific serine protease. Complement factor D is the rate-limiting enzyme in the alternative pathway of complement. It activates C3 convertase by cleaving factor B, which is a key step in the alternative pathway. Complement factor D catalyzes the cleavage of factor B to generate Ba (non-catalytic chain) and Bb (active catalytic subunit), which together with C3(H₂O) (or C3b) constitute the active C3 convertase C3(H₂O)Bb (or C3bBb). (PMID: 34566967; PMID: 27775713).

Storage

Storage:
Store at -20°C. Stable for one year after shipment.
Storage Buffer:
PBS with 0.02% sodium azide and 50% glycerol
Aliquoting is unnecessary for -20°C storage

For technical support and original validation data for this product please contact:

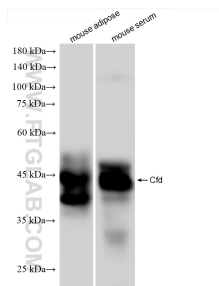
T: 4006900926

E: Proteintech-CN@ptglab.com

W: ptgcn.com

This product is exclusively available under Proteintech Group brand and is not available to purchase from any other manufacturer.

Selected Validation Data



Various lysates were subjected to SDS PAGE followed by western blot with 85643-4-RR (Cfd antibody) at dilution of 1:5000 incubated at room temperature for 1.5 hours.