

For Research Use Only

THOC1 Recombinant antibody, PBS Only (Detector)

Catalog Number: 85642-3-PBS



Basic Information

Catalog Number:

85642-3-PBS

Concentration:

1 mg/ml

Source:

Rabbit

Isotype:

IgG

Immunogen Catalog Number:

AG1352

GenBank Accession Number:

BC010381

GeneID (NCBI):

9984

UNIPROT ID:

Q96FV9

Full Name:

THO complex 1

Calculated MW:

84 kDa

Purification Method:

Protein A purification

CloneNo.:

243161H5

Applications

Tested Applications:

Cytometric bead array, Sandwich ELISA, Indirect ELISA,
Sample test

Species Specificity:

human

Background Information

Storage

Storage:

Store at -80°C.

The product is shipped with ice packs. Upon receipt, store it immediately at -80°C

Storage Buffer:

PBS Only

For technical support and original validation data for this product please contact:

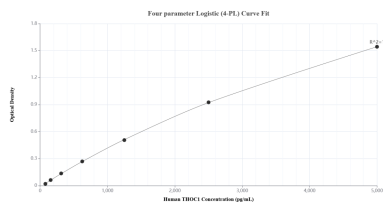
T: 4006900926

E: Proteintech-CN@ptglab.com

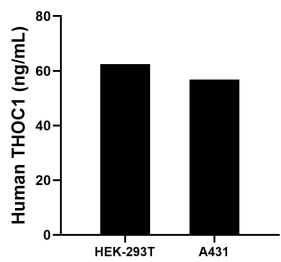
W: ptgcn.com

This product is exclusively available under Proteintech Group brand and is not available to purchase from any other manufacturer.

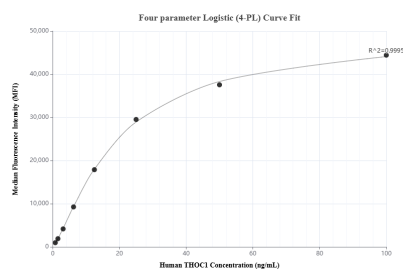
Selected Validation Data



Sandwich ELISA standard curve of MP02063-3, Human THOC1 Recombinant Matched Antibody Pair - PBS only. 85642-6-PBS was coated to a plate as the capture antibody and incubated with serial dilutions of standard Ag1352. 85642-3-PBS was HRP conjugated as the detection antibody. Range: 78.1-5000 pg/mL.



The mean THOC1 concentration was determined to be 62.5 ng/mL in HEK-293T cell extract based on a 3.2 mg/mL extract load and 56.8 ng/mL in A431 cell extract based on a 3.7 mg/mL extract load.



Cytometric bead array standard curve of MP02063-1, THOC1 Recombinant Matched Antibody Pair, PBS Only. Capture antibody: 85642-4-PBS. Detection antibody: 85642-3-PBS. Standard: Ag1352. Range: 0.781-100 ng/mL.