

For Research Use Only

# SF3B1 Recombinant antibody, PBS Only (Detector)

Catalog Number: 85640-4-PBS



## Basic Information

Catalog Number: 85640-4-PBS	GenBank Accession Number: NM_012433	Purification Method: Protein A purification
Concentration: 1 mg/ml	GeneID (NCBI): 23451	CloneNo.: 243145C6
Source: Rabbit	UNIPROT ID: O75533	
Isotype: IgG	Full Name: splicing factor 3b, subunit 1, 155kDa	
Immunogen Catalog Number: AG26689	Calculated MW: 146 kDa	
	Observed MW: 146 kDa	

## Applications

**Tested Applications:**  
WB, Sandwich ELISA, Indirect ELISA, Sample test

**Species Specificity:**  
human, mouse, rat

## Background Information

SF3B1, also named as SAP155, is a 1304 amino acid protein, which belongs to the SF3B1 family. SF3B1 is a subunit of the splicing factor SF3B required for 'A' complex assembly formed by the stable binding of U2 snRNP to the branchpoint sequence (BPS) in pre-mRNA. Sequence independent binding of SF3A/SF3B complex upstream of the branch site is essential, it may anchor U2 snRNP to the pre-mRNA. SF3B1 may also be involved in the assembly of the 'E' complex. SF3B1 belongs also to the minor U12-dependent spliceosome, which is involved in the splicing of rare class of nuclear pre-mRNA intron.

## Storage

**Storage:**  
Store at -80°C.  
**The product is shipped with ice packs. Upon receipt, store it immediately at -80°C**

**Storage Buffer:**  
PBS only

For technical support and original validation data for this product please contact:

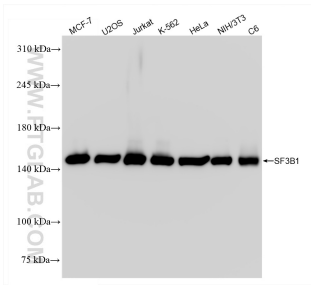
T: 4006900926

E: Proteintech-CN@ptglab.com

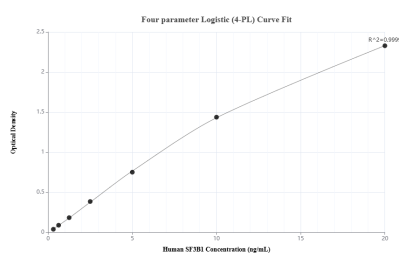
W: ptgcn.com

**This product is exclusively available under Proteintech Group brand and is not available to purchase from any other manufacturer.**

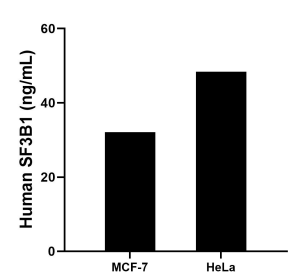
## Selected Validation Data



Various lysates were subjected to SDS PAGE followed by western blot with 85640-4-RR (SF3B1 antibody) at dilution of 1:10000 incubated at room temperature for 1.5 hours. This data was developed using the same antibody clone with 85640-4-PBS in a different storage buffer formulation.



Sandwich ELISA standard curve of MP02058-3, Human SF3B1 Recombinant Matched Antibody Pair - PBS only. 85640-3-PBS was coated to a plate as the capture antibody and incubated with serial dilutions of standard Ag26689. 85640-4-PBS was HRP conjugated as the detection antibody. Range: 0.313-20 ng/mL



The mean SF3B1 concentration was determined to be 32.11 ng/mL in MCF-7 cell extract based on a 1.3 mg/mL extract load and 48.40 ng/mL in HeLa cell extract based on a 1.8 mg/mL extract load.