

For Research Use Only

SF3B1 Recombinant antibody, PBS Only (Capture)

Catalog Number: 85640-3-PBS



Basic Information

Catalog Number:

85640-3-PBS

Concentration:

1 mg/ml

Source:

Rabbit

Isotype:

IgG

Immunogen Catalog Number:

AG26689

GenBank Accession Number:

NM_012433

GeneID (NCBI):

23451

UNIPROT ID:

O75533

Full Name:

splicing factor 3b, subunit 1, 155kDa

Calculated MW:

146 kDa

Purification Method:

Protein A purification

CloneNo.:

243145C8

Applications

Tested Applications:

Cytometric bead array, Sandwich ELISA, Indirect ELISA,
Sample test

Species Specificity:

human

Background Information

Storage

Storage:

Store at -80°C.

The product is shipped with ice packs. Upon receipt, store it immediately at -80°C

Storage Buffer:

PBS Only

For technical support and original validation data for this product please contact:

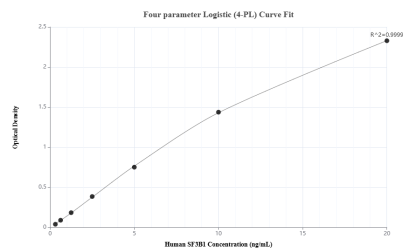
T: 4006900926

E: Proteintech-CN@ptglab.com

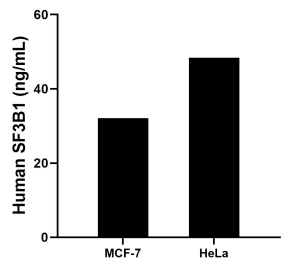
W: ptgcn.com

This product is exclusively available under Proteintech Group brand and is not available to purchase from any other manufacturer.

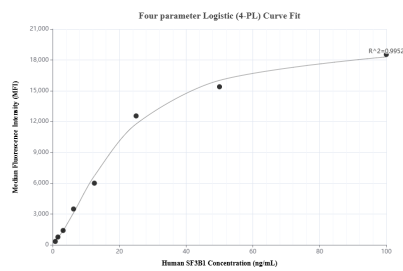
Selected Validation Data



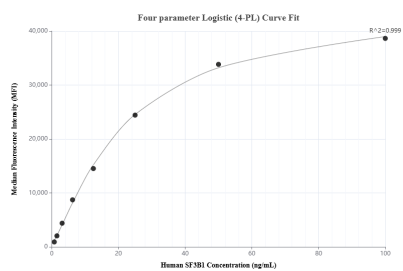
Sandwich ELISA standard curve of MP02058-3, Human SF3B1 Recombinant Matched Antibody Pair - PBS only. 85640-3-PBS was coated to a plate as the capture antibody and incubated with serial dilutions of standard Ag26689. 85640-4-PBS was HRP conjugated as the detection antibody. Range: 0.313-20 ng/mL



The mean SF3B1 concentration was determined to be 32.11 ng/mL in MCF-7 cell extract based on a 1.3 mg/mL extract load and 48.40 ng/mL in HeLa cell extract based on a 1.8 mg/mL extract load.



Cytometric bead array standard curve of MP02058-2, SF3B1 Recombinant Matched Antibody Pair, PBS Only. Capture antibody: 85640-3-PBS. Detection antibody: 85640-2-PBS. Standard: Ag26689. Range: 0.781-100 ng/mL



Cytometric bead array standard curve of MP02058-1, SF3B1 Recombinant Matched Antibody Pair, PBS Only. Capture antibody: 85640-3-PBS. Detection antibody: 85640-1-PBS. Standard: Ag26689. Range: 0.781-100 ng/mL