

For Research Use Only

# ANG Recombinant antibody, PBS Only (Capture)

Catalog Number: 85635-3-PBS



## Basic Information

Catalog Number:

85635-3-PBS

Concentration:

1 mg/ml

Source:

Rabbit

Isotype:

IgG

GenBank Accession Number:

BC054880

GeneID (NCBI):

283

UNIPROT ID:

P03950

Full Name:

angiogenin, ribonuclease, RNase A family, 5

Calculated MW:

147 aa, 17 kDa

Purification Method:

Protein A purification

CloneNo.:

242738A7

## Applications

Tested Applications:

Cytometric bead array, Sandwich ELISA, Indirect ELISA, Sample test

Species Specificity:

human

## Background Information

### Storage

Storage:

Store at -80°C.

The product is shipped with ice packs. Upon receipt, store it immediately at -80°C

Storage Buffer:

PBS Only

For technical support and original validation data for this product please contact:

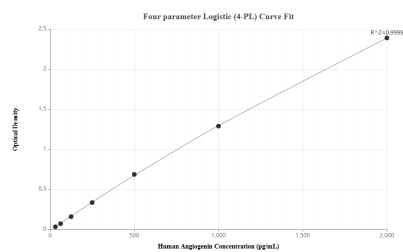
T: 4006900926

E: Proteintech-CN@ptglab.com

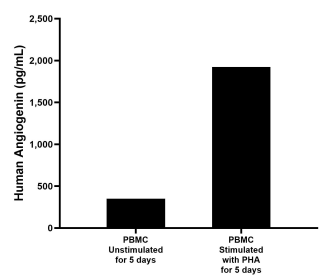
W: ptgcn.com

This product is exclusively available under Proteintech Group brand and is not available to purchase from any other manufacturer.

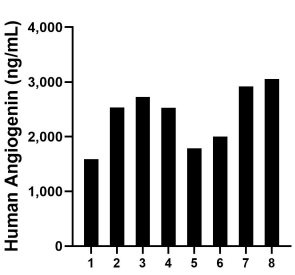
## Selected Validation Data



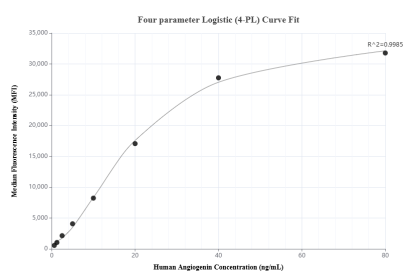
Sandwich ELISA standard curve of MP02050-3, Human Angiogenin Recombinant Matched Antibody Pair - PBS only. 85635-3-PBS was coated to a plate as the capture antibody and incubated with serial dilutions of standard Eg1930. 85635-4-PBS was HRP conjugated as the detection antibody. Range: 39.1-2500 pg/mL



Human peripheral blood mononuclear cells (PBMC) were cultured unstimulated or stimulated with 10  $\mu$ g/mL PHA for 5 days. The mean Angiogenin concentration was determined to be 350.15 pg/mL in unstimulated PBMC supernatant, 1922.45 pg/mL in PHA stimulated PBMC supernatant.



Serum of eight individual healthy human donors was measured. The human Angiogenin concentration of detected samples was determined to be 2,391.69 ng/mL with a range of 1,589.9-3,053.2 ng/mL.



Cytometric bead array standard curve of MP02050-2, Angiogenin Recombinant Matched Antibody Pair, PBS Only. Capture antibody: 85635-3-PBS. Detection antibody: 85635-2-PBS. Standard: Eg1930. Range: 0.625-80 ng/mL