

For Research Use Only

# POLR1A Recombinant antibody

Catalog Number: 85633-1-RR



## Basic Information

Catalog Number:

85633-1-RR

Concentration:

1000 µg/ml

Source:

Rabbit

Isotype:

IgG

Immunogen Catalog Number:

AG14543

GenBank Accession Number:

BC017115

GeneID (NCBI):

25885

UNIPROT ID:

O95602

Full Name:

polymerase (RNA) I polypeptide A,  
194kDa

Calculated MW:

1720 aa, 195 kDa

Observed MW:

190-195 kDa

Purification Method:

Protein A purification

CloneNo.:

243082E3

Recommended Dilutions:

WB 1:5000-1:50000

## Applications

Tested Applications:

WB, ELISA

Species Specificity:

human, mouse, rat

Positive Controls:

WB : HEK-293 cells, HeLa cells, HepG2 cells, LNCaP cells, MCF-7 cells, NIH/3T3 cells, HSC-T6 cells

## Background Information

POLR1A, DNA-directed RNA polymerase I subunit RPA1, is a DNA-dependent RNA polymerase catalyzes the transcription of DNA into RNA. RNA polymerase I (Pol I) located in the nucleolus and transcribes class I genes, which code for large ribosomal RNA. Different subunits of the Pol I transcription are targets of various physiological stimuli, which suggests that multiple signaling pathways are involved in carrying out Pol I transcription. Together with the second largest subunit, it is the catalytic core component of RNA polymerase I that synthesizes ribosomal RNA precursors.

## Storage

Storage:

Store at -20°C. Stable for one year after shipment.

Storage Buffer:

PBS with 0.02% sodium azide and 50% glycerol, pH7.3

Aliquoting is unnecessary for -20°C storage

For technical support and original validation data for this product please contact:

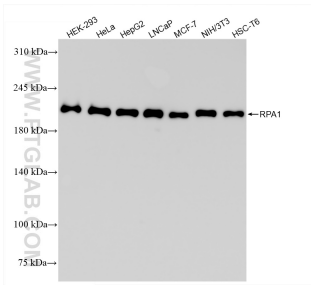
T: 4006900926

E: [Proteintech-CN@ptglab.com](mailto:Proteintech-CN@ptglab.com)

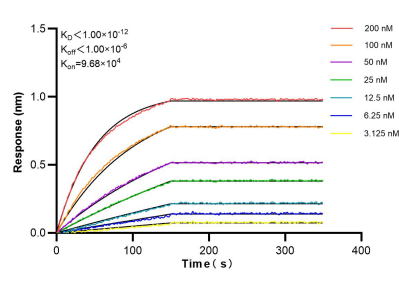
W: [ptgcn.com](http://ptgcn.com)

This product is exclusively available under Proteintech Group brand and is not available to purchase from any other manufacturer.

## Selected Validation Data



Various lysates were subjected to SDS PAGE followed by western blot with 85633-1-RR (POLR1A antibody) at dilution of 1:10000 incubated at room temperature for 1.5 hours.



Biolayer interferometry (BLI) kinetic assays of 85633-1-RR against Human POLR1A were performed. The affinity constant is below 1 pM.