

For Research Use Only

GPNMB Recombinant monoclonal antibody

Catalog Number:85632-5-RR



Basic Information

Catalog Number: 85632-5-RR	GenBank Accession Number: NM_133298.1	Purification Method: Protein A purification
Source: Rabbit	GeneID (NCBI): 113955	CloneNo.: 242601D1
Isotype: IgG	UNIPROT ID: Q9QZF6	Recommended Dilutions: WB: 1:500-1:2000 IP: 0.5-4.0 ug for 1.0-3.0 mg of total protein lysate
Immunogen Catalog Number: EG3283	Full Name: glycoprotein (transmembrane) nmb	
	Calculated MW: 64 kDa	
	Observed MW: 120 kDa, 95 kDa	

Applications

Tested Applications: WB, IP, ELISA	Positive Controls:
Species Specificity: rat	WB : rat spleen tissue, Rat Lung tissue IP : rat spleen tissue,

Background Information

GPNMB also known as HGFIN, osteoactivin, and DC-HIL, is a type I membrane glycoprotein involved in various biological processes, including inflammation, invasion and metastasis of malignant tumors, cell differentiation, and tissue regeneration. GPNMB shows expression in the lowly metastatic human melanoma cell lines and xenografts but does not show expression in the highly metastatic cell lines. GPNMB acts as an osteogenic factor that stimulates osteoblast differentiation in vivo and in vitro.

Storage

Storage:
Store at -20°C. Stable for one year after shipment.
Storage Buffer:
PBS with 0.02% sodium azide and 50% glycerol, pH7.3
Aliquoting is unnecessary for -20°C storage

For technical support and original validation data for this product please contact:

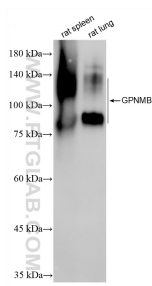
T: 4006900926

E: Proteintech-CN@ptglab.com

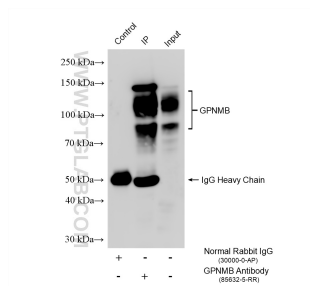
W: ptgcn.com

This product is exclusively available under Proteintech Group brand and is not available to purchase from any other manufacturer.

Selected Validation Data



Various lysates were subjected to SDS PAGE followed by western blot with 85632-5-RR (Osteoactivin/GPNMB antibody) at dilution of 1:1000 incubated at room temperature for 1.5 hours.



IP result of anti-GPNMB (IP:85632-5-RR, 4ug; Detection:85632-5-RR 1:500) with rat spleen tissue lysate 2400 ug.