

For Research Use Only

RNF20 Recombinant antibody, PBS Only (Capture/Detector)

Catalog Number: 85630-5-PBS



Basic Information

Catalog Number:

85630-5-PBS

Concentration:

1 mg/ml

Source:

Rabbit

Isotype:

IgG

Immunogen Catalog Number:

AG16066

GenBank Accession Number:

BC110585

GeneID (NCBI):

56254

UNIPROT ID:

Q5VTR2

Full Name:

ring finger protein 20

Calculated MW:

975 aa, 114 kDa

Purification Method:

Protein A purification

CloneNo.:

243078F6

Applications

Tested Applications:

Cytometric bead array, Sandwich ELISA, Indirect ELISA,
Sample test

Species Specificity:

human

Background Information

Storage

Storage:

Store at -80°C.

The product is shipped with ice packs. Upon receipt, store it immediately at -80°C

Storage Buffer:

PBS only, pH7.3

For technical support and original validation data for this product please contact:

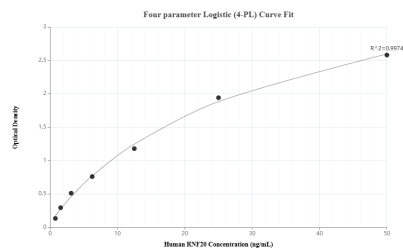
T: 4006900926

E: Proteintech-CN@ptglab.com

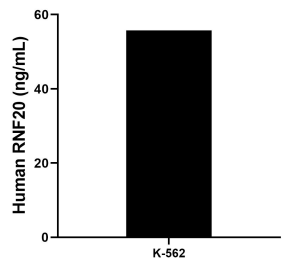
W: ptgcn.com

This product is exclusively available under Proteintech Group brand and is not available to purchase from any other manufacturer.

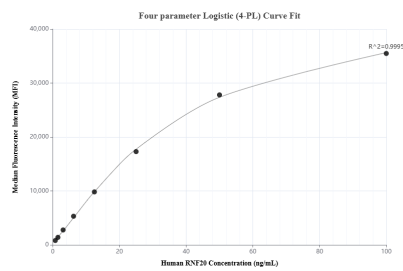
Selected Validation Data



Sandwich ELISA standard curve of MP02014-3, Human RNF20 Recombinant Matched Antibody Pair - PBS only. 85630-5-PBS was coated to a plate as the capture antibody and incubated with serial dilutions of standard Ag16066. 85630-7-PBS was HRP conjugated as the detection antibody. Range: 0.781-50 ng/mL



The mean RNF20 concentration was determined to be 55.74 ng/mL in K-562 cell extract based on a 2.5 mg/mL extract load.



Cytometric bead array standard curve of MP02014-1, RNF20 Recombinant Matched Antibody Pair, PBS Only. Capture antibody: 85630-6-PBS. Detection antibody: 85630-5-PBS. Standard: Ag16066. Range: 0.781-100 ng/mL