

For Research Use Only

# LRAT Recombinant antibody, PBS Only

Catalog Number: 85628-1-PBS



## Basic Information

Catalog Number:	85628-1-PBS	GenBank Accession Number:	BC031053	Purification Method:	Protein A purification
Concentration:	1 mg/ml	GeneID (NCBI):	9227	CloneNo.:	243058B5
Source:	Rabbit	UNIPROT ID:	O95237		
Isotype:	IgG	Full Name:	lecithin retinol acyltransferase (phosphatidylcholine--retinol O-acyltransferase)		
Immunogen Catalog Number:	AG3556	Calculated MW:	230 aa, 26 kDa		
		Observed MW:	26 kDa, 50-54 kDa		

## Applications

Tested Applications:  
WB, Indirect ELISA

Species Specificity:  
human, mouse, rat

## Background Information

LRAT belongs to the H-rev107 family. LRAT transfers the acyl group from the sn-1 position of phosphatidylcholine to all-trans retinol, producing all-trans retinyl esters. LRAT plays a critical role in vision. It provides the all-trans retinyl ester substrates for the isomerohydrolase which processes the esters into 11-cis-retinol in the retinal pigment epithelium; due to a membrane-associated alcohol dehydrogenase, LRAT monomers (26kDa) interact in membranes and form functional homodimers (50-54 kDa) through protein-protein interactions and disulfide bond formation. Defects in LRAT are a cause of severe early-onset retinal dystrophy (RD). This antibody was generated against the internal residues of human LRAT. It is predicted to detect endogenous LRAT.

## Storage

Storage:  
Store at -80°C.  
**The product is shipped with ice packs. Upon receipt, store it immediately at -80°C**

Storage Buffer:  
PBS only, pH7.3

For technical support and original validation data for this product please contact:

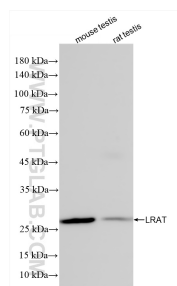
T: 4006900926

E: Proteintech-CN@ptglab.com

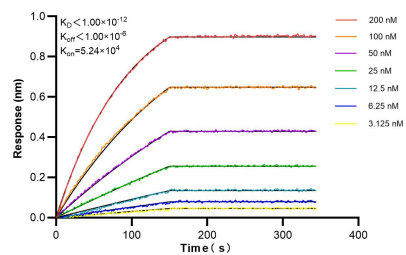
W: ptgcn.com

**This product is exclusively available under Proteintech Group brand and is not available to purchase from any other manufacturer.**

## Selected Validation Data



Various lysates were subjected to SDS PAGE followed by western blot with 85628-1-RR (LRAT antibody) at dilution of 1:3000 incubated at room temperature for 1.5 hours. This data was developed using the same antibody clone with 85628-1-PBS in a different storage buffer formulation.



Biolayer interferometry (BLI) kinetic assays of 85628-1-RR against Human LRAT were performed. The affinity constant is below 1 pM.