

For Research Use Only

# PLEK2 Recombinant antibody

Catalog Number: 85619-4-RR



## Basic Information

**Catalog Number:**

85619-4-RR

**Concentration:**

1000 ug/ml

**Source:**

Rabbit

**Isotype:**

IgG

**Immunogen Catalog Number:**

AG2297

**GenBank Accession Number:**

BC001226

**GeneID (NCBI):**

26499

**UNIPROT ID:**

Q9NYTO

**Full Name:**

pleckstrin 2

**Calculated MW:**

353 aa, 40 kDa

**Observed MW:**

38-40 kDa

**Purification Method:**

Protein A purification

**CloneNo.:**

242987B7

**Recommended Dilutions:**

WB 1:1000-1:6000

## Applications

**Tested Applications:**

WB, ELISA

**Species Specificity:**

human

**Positive Controls:**

WB : HT-29 cells, U2OS cells, PC-3 cells, Caco-2 cells

## Background Information

PLEK2 belongs to the Pleckstrin homology domain family and is a 40-kDa protein containing the prototypic PH domains at its amino and carboxyl termini (PMID: 10419454). PLEK2 associates with membrane-bound phosphatidylinositols generated by phosphatidylinositol 3-kinase. PLEK2 interacts with the actin cytoskeleton to induce cell spreading.

## Storage

**Storage:**

Store at -20°C. Stable for one year after shipment.

**Storage Buffer:**

PBS with 0.02% sodium azide and 50% glycerol, pH7.3

Aliquoting is unnecessary for -20°C storage

For technical support and original validation data for this product please contact:

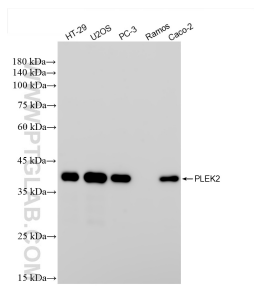
T: 4006900926

E: [Proteintech-CN@ptglab.com](mailto:Proteintech-CN@ptglab.com)

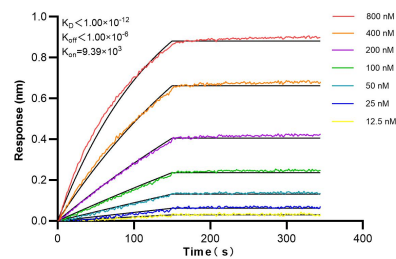
W: [ptgcn.com](http://ptgcn.com)

This product is exclusively available under Proteintech Group brand and is not available to purchase from any other manufacturer.

## Selected Validation Data



HT-29, U2OS, PC-3, Caco-2 (positive) and Ramos (negative) cells were subjected to SDS PAGE followed by western blot with 85619-4-RR (PLEK2 antibody) at dilution of 1:3000 incubated at room temperature for 1.5 hours.



Biolayer interferometry (BLI) kinetic assays of 85619-4-RR against Human PLEK2 were performed. The affinity constant is below 1 pM.