

For Research Use Only

SRPK2 Recombinant antibody, PBS Only (Detector)

Catalog Number: 85613-2-PBS



Basic Information

Catalog Number:

85613-2-PBS

Concentration:

1000 ug/ml

Source:

Rabbit

Isotype:

IgG

Immunogen Catalog Number:

AG17885

GenBank Accession Number:

BC035214

GeneID (NCBI):

6733

UNIPROT ID:

P78362

Full Name:

SFRS protein kinase 2

Calculated MW:

688 aa, 78 kDa

Purification Method:

Protein A purification

CloneNo.:

242935F7

Applications

Tested Applications:

Cytometric bead array, Indirect ELISA

Species Specificity:

human

Background Information

Storage

Storage:

Store at -80°C.

The product is shipped with ice packs. Upon receipt, store it immediately at -80°C

Storage Buffer:

PBS only, pH7.3

For technical support and original validation data for this product please contact:

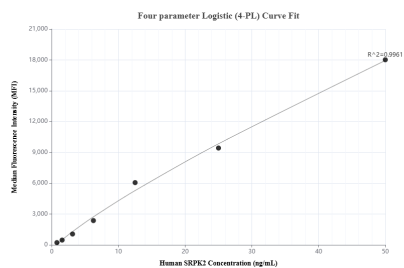
T: 4006900926

E: Proteintech-CN@ptglab.com

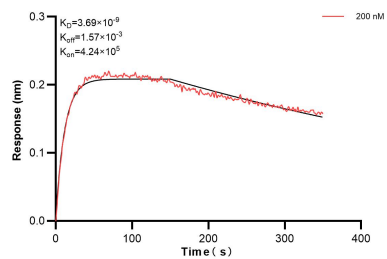
W: ptgcn.com

This product is exclusively available under Proteintech Group brand and is not available to purchase from any other manufacturer.

Selected Validation Data



Cytometric bead array standard curve of MP01968-2, SRPK2 Recombinant Matched Antibody Pair, PBS Only. Capture antibody: 85613-3-PBS. Detection antibody: 85613-2-PBS. Standard: Ag17885. Range: 0.781-50 ng/mL



Biolayer interferometry (BLI) kinetic assay of 85613-2-PBS against Human SRPK2 was performed. The affinity constant is 3.69 nM.