

For Research Use Only

PGLYRP1 Recombinant antibody, PBS Only (Capture)

Catalog Number: 85610-3-PBS



Basic Information

Catalog Number:

85610-3-PBS

Concentration:

1 mg/ml

Source:

Rabbit

Isotype:

IgG

GenBank Accession Number:

NM_005091.2

GeneID (NCBI):

8993

UNIPROT ID:

O75594

Full Name:

peptidoglycan recognition protein 1

Calculated MW:

22 kDa

Purification Method:

Protein A purification

CloneNo.:

243004F3

Applications

Tested Applications:

Cytometric bead array, Sandwich ELISA, Indirect ELISA,
Sample test

Species Specificity:

human

Background Information

Storage

Storage:

Store at -80°C.

The product is shipped with ice packs. Upon receipt, store it immediately at -80°C

Storage Buffer:

PBS Only

For technical support and original validation data for this product please contact:

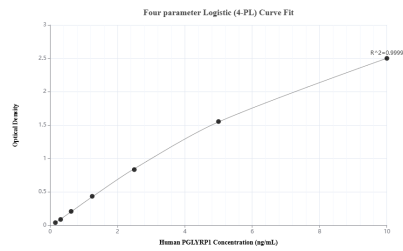
T: 4006900926

E: Proteintech-CN@ptglab.com

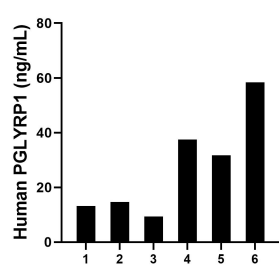
W: ptgcn.com

This product is exclusively available under Proteintech Group brand and is not available to purchase from any other manufacturer.

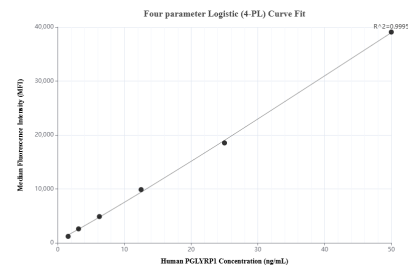
Selected Validation Data



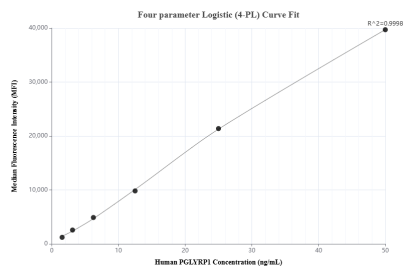
Sandwich ELISA standard curve of MP01966-2, Human PGLYRP1 Recombinant Matched Antibody Pair - PBS only. 85610-3-PBS was coated to a plate as the capture antibody and incubated with serial dilutions of standard Eg3122. 85610-1-PBS was HRP conjugated as the detection antibody. Range: 0.156-10 ng/mL



Saliva of six individual healthy human donors was measured. The human PGLYRP1 concentration of detected samples was determined to be 27.47 ng/mL with a range of 9.3 - 58.4 ng/mL



Cytometric bead array standard curve of MP01966-1, PGLYRP1 Recombinant Matched Antibody Pair, PBS Only. Capture antibody: 85610-3-PBS. Detection antibody: 85610-2-PBS. Standard: Eg3122. Range: 1.563-50 ng/mL



Cytometric bead array standard curve of MP01966-2, PGLYRP1 Recombinant Matched Antibody Pair, PBS Only. Capture antibody: 85610-3-PBS. Detection antibody: 85610-1-PBS. Standard: Eg3122. Range: 1.563-50 ng/mL