

For Research Use Only

# CXCL5 Recombinant antibody, PBS Only (Capture/Detector)

Catalog Number: 85606-3-PBS



## Basic Information

Catalog Number:

85606-3-PBS

Concentration:

1 mg/ml

Source:

Rabbit

Isotype:

IgG

GenBank Accession Number:

NM\_002994.4

GeneID (NCBI):

6374

UNIPROT ID:

P42830

Full Name:

chemokine (C-X-C motif) ligand 5

Calculated MW:

12 kDa

Purification Method:

Protein A purification

CloneNo.:

242885F11

## Applications

Tested Applications:

Cytometric bead array, Sandwich ELISA, Indirect ELISA,  
Sample test

Species Specificity:

human

## Background Information

### Storage

Storage:

Store at -80°C.

**The product is shipped with ice packs. Upon receipt, store it immediately at -80°C**

Storage Buffer:

PBS Only

For technical support and original validation data for this product please contact:

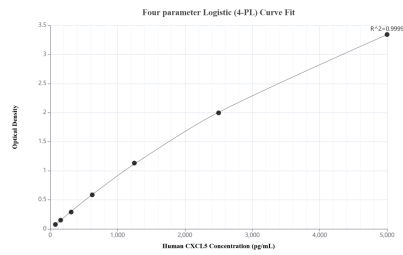
T: 4006900926

E: Proteintech-CN@ptglab.com

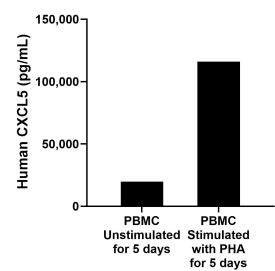
W: ptgcn.com

**This product is exclusively available under Proteintech Group brand and is not available to purchase from any other manufacturer.**

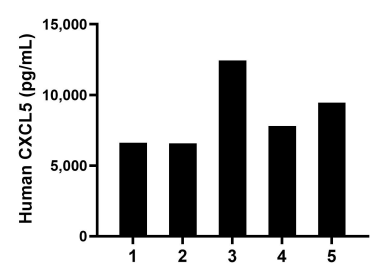
Selected Validation Data



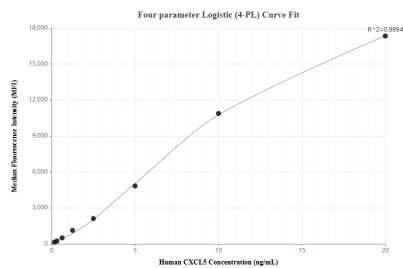
Sandwich ELISA standard curve of MP01987-3, Human CXCL5 Recombinant Matched Antibody Pair - PBS only. 85606-3-PBS was coated to a plate as the capture antibody and incubated with serial dilutions of standard Eg2939. 85606-1-PBS was HRP conjugated as the detection antibody. Range: 78.1-5000 pg/mL



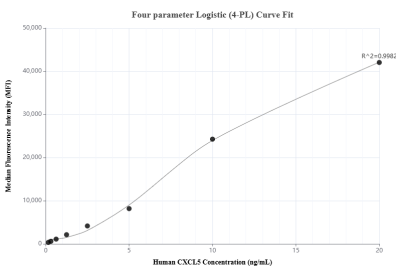
Human peripheral blood mononuclear cells (PBMC) were cultured unstimulated or stimulated with 10  $\mu$ g/mL PHA for 5 days. The mean CXCL5 concentration was determined to be 19,798.6 pg/mL in unstimulated PBMC supernatant, 115,946.9 pg/mL in PHA stimulated PBMC supernatant.



Serum of five individual healthy human donors was measured. The CXCL5 concentration of detected samples was determined to be 8,576.4 pg/mL with a range of 6,580.8-12,447.7 pg/mL.



Cytometric bead array standard curve of MP01987-2, CXCL5 Recombinant Matched Antibody Pair, PBS Only. Capture antibody: 85606-3-PBS. Detection antibody: 85606-2-PBS. Standard: Eg2939. Range: 0.156-20 ng/mL



Cytometric bead array standard curve of MP01987-1, CXCL5 Recombinant Matched Antibody Pair, PBS Only. Capture antibody: 85606-1-PBS. Detection antibody: 85606-3-PBS. Standard: Eg2939. Range: 0.156-20 ng/mL