

For Research Use Only

EHD2 Recombinant antibody, PBS Only (Detector)

Catalog Number: 85604-1-PBS



Basic Information

Catalog Number:

85604-1-PBS

Concentration:

1 mg/ml

Source:

Rabbit

Isotype:

IgG

Immunogen Catalog Number:

AG2002

GenBank Accession Number:

BC014445

GeneID (NCBI):

30846

UNIPROT ID:

Q9NZN4

Full Name:

EH-domain containing 2

Calculated MW:

543 aa, 61 kDa

Purification Method:

Protein A purification

CloneNo.:

243038H3

Applications

Tested Applications:

Cytometric bead array, Sandwich ELISA, Indirect ELISA, Sample test

Species Specificity:

human

Background Information

Storage

Storage:

Store at -80°C.

The product is shipped with ice packs. Upon receipt, store it immediately at -80°C

Storage Buffer:

PBS Only

For technical support and original validation data for this product please contact:

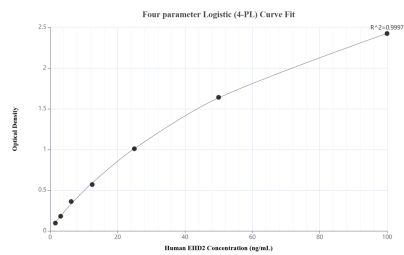
T: 4006900926

E: Proteintech-CN@ptglab.com

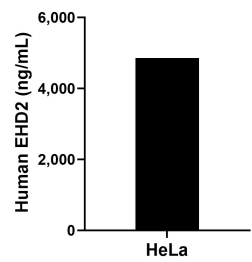
W: ptgcn.com

This product is exclusively available under Proteintech Group brand and is not available to purchase from any other manufacturer.

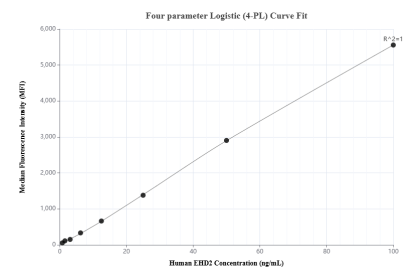
Selected Validation Data



Sandwich ELISA standard curve of MP01971-3, Human EHD2 Recombinant Matched Antibody Pair - PBS only. 85604-5-PBS was coated to a plate as the capture antibody and incubated with serial dilutions of standard Ag2002. 85604-1-PBS was HRP conjugated as the detection antibody. Range: 1.56-100 ng/mL.



The mean EHD2 concentration was determined to be 4,860.77 ng/mL in HeLa cell extract based on a 1.80 mg/mL extract load.



Cytometric bead array standard curve of MP01971-2, EHD2 Recombinant Matched Antibody Pair, PBS Only. Capture antibody: 85604-3-PBS. Detection antibody: 85604-1-PBS. Standard: Ag2002. Range: 0.781-100 ng/mL.