

For Research Use Only

# EIF3I Recombinant antibody, PBS Only (Detector)

Catalog Number: 85603-2-PBS



## Basic Information

Catalog Number: 85603-2-PBS	GenBank Accession Number: BC000413	Purification Method: Protein A purification
Concentration: 1 mg/ml	GeneID (NCBI): 8668	CloneNo.: 243040B3
Source: Rabbit	UNIPROT ID: Q13347	
Isotype: IgG	Full Name: eukaryotic translation initiation factor 3, subunit I	
Immunogen Catalog Number: AG1847	Calculated MW: 36 kDa	
	Observed MW: 36 kDa	

## Applications

**Tested Applications:**  
WB, Cytometric bead array, Indirect ELISA

**Species Specificity:**  
human, mouse

## Background Information

Eukaryotic initiation factor (EIF3) complex is the largest of the eIFs and consists of more than 10 nonidentical subunit, and is required for several steps in the initiation of protein synthesis. It associates with the 40S ribosome and facilitates the recruitment of eIF-1, eIF-1A, eIF-2:GTP:methionyl-tRNA<sup>i</sup> and eIF-5 to form the 43S preinitiation complex (43S PIC). Also it can stimulates mRNA recruitment to the 43S PIC and scanning of the mRNA for AUG recognition. The eIF-3 complex is also required for disassembly and recycling of posttermination ribosomal complexes and subsequently prevents premature joining of the 40S and 60S ribosomal subunits prior to initiation. EIF3I is one subunit of EIF3 complex.

## Storage

**Storage:**  
Store at -80°C.  
**The product is shipped with ice packs. Upon receipt, store it immediately at -80°C**

**Storage Buffer:**  
PBS Only

For technical support and original validation data for this product please contact:

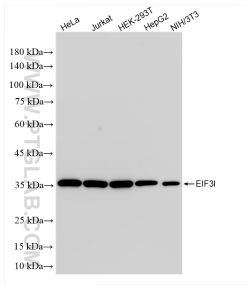
T: 4006900926

E: Proteintech-CN@ptglab.com

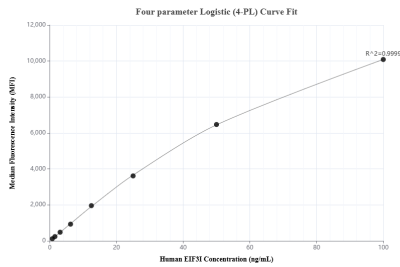
W: ptgcn.com

**This product is exclusively available under Proteintech Group brand and is not available to purchase from any other manufacturer.**

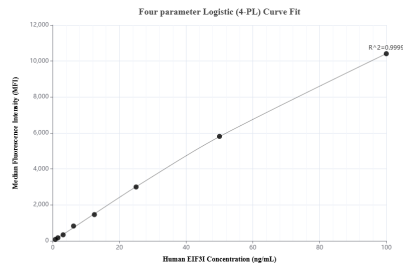
# Selected Validation Data



Various lysates were subjected to SDS PAGE followed by western blot with 85603-2-RR (EIF3I antibody) at dilution of 1:10000 incubated at room temperature for 1.5 hours. This data was developed using the same antibody clone with 85603-2-PBS in a different storage buffer formulation.



Cytometric bead array standard curve of MP01969-2, EIF3I Recombinant Matched Antibody Pair, PBS Only. Capture antibody: 85603-3-PBS. Detection antibody: 85603-2-PBS. Standard: Ag1847. Range: 0.781-100 ng/mL.



Cytometric bead array standard curve of MP01969-1, EIF3I Recombinant Matched Antibody Pair, PBS Only. Capture antibody: 85603-1-PBS. Detection antibody: 85603-2-PBS. Standard: Ag1847. Range: 0.781-100 ng/mL.