

For Research Use Only

GLUD2 Recombinant antibody, PBS Only (Detector)

Catalog Number: 85602-1-PBS



Basic Information

Catalog Number:	85602-1-PBS	GenBank Accession Number:	BC050732	Purification Method:	Protein A purification
Concentration:	1 mg/ml	GeneID (NCBI):	2747	CloneNo.:	243041F8
Source:	Rabbit	UNIPROT ID:	P49448		
Isotype:	IgG	Full Name:	glutamate dehydrogenase 2		
Immunogen Catalog Number:	AG5748	Calculated MW:	61 kDa		

Applications

Tested Applications:
Cytometric bead array, Sandwich ELISA, Indirect ELISA, Sample test

Species Specificity:
human

Background Information

Storage

Storage:
Store at -80°C.
The product is shipped with ice packs. Upon receipt, store it immediately at -80°C

Storage Buffer:
PBS Only

For technical support and original validation data for this product please contact:

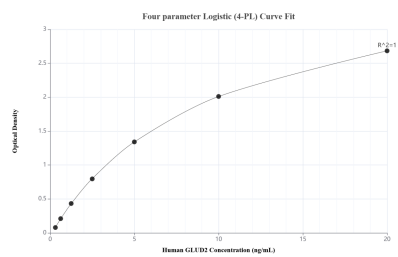
T: 4006900926

E: Proteintech-CN@ptglab.com

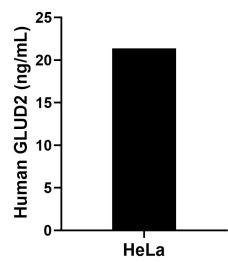
W: ptgcn.com

This product is exclusively available under Proteintech Group brand and is not available to purchase from any other manufacturer.

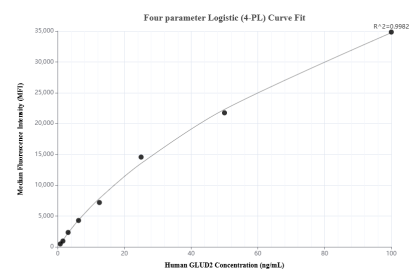
Selected Validation Data



Sandwich ELISA standard curve of MP01985-3, Human GLUD2 Recombinant Matched Antibody Pair - PBS only. 85602-6-PBS was coated to a plate as the capture antibody and incubated with serial dilutions of standard Ag5748. 85602-1-PBS was HRP conjugated as the detection antibody. Range: 0.313-20 ng/mL



The mean GLUD2 concentration was determined to be 21.35 ng/mL in HeLa cell extract based on a 1.80 mg/mL extract load.



Cytometric bead array standard curve of MP01985-1, GLUD2 Recombinant Matched Antibody Pair, PBS Only. Capture antibody: 85602-2-PBS. Detection antibody: 85602-1-PBS. Standard: Ag5748. Range: 0.781-100 ng/mL