

For Research Use Only

# Mouse Calr Recombinant antibody, PBS Only (Capture)

Catalog Number: 85593-4-PBS



## Basic Information

Catalog Number:

85593-4-PBS

Concentration:

1 mg/ml

Source:

Rabbit

Isotype:

IgG

GenBank Accession Number:

NM\_007591.3

GeneID (NCBI):

12317

UNIPROT ID:

P14211

Full Name:

calreticulin

Calculated MW:

48 kDa

Purification Method:

Protein A purification

CloneNo.:

243011C6

## Applications

Tested Applications:

Cytometric bead array, Sandwich ELISA, Indirect ELISA,  
Sample test

Species Specificity:

mouse

## Background Information

### Storage

Storage:

Store at -80°C.

**The product is shipped with ice packs. Upon receipt, store it immediately at -80°C**

Storage Buffer:

PBS Only

For technical support and original validation data for this product please contact:

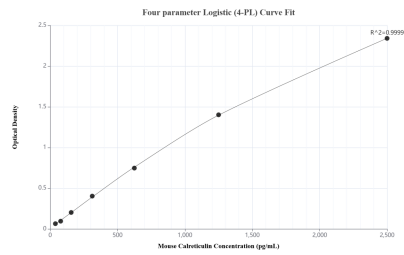
T: 4006900926

E: Proteintech-CN@ptglab.com

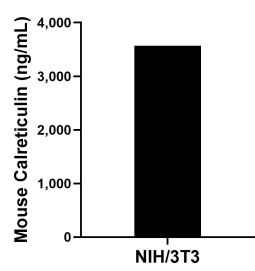
W: ptgcn.com

**This product is exclusively available under Proteintech Group brand and is not available to purchase from any other manufacturer.**

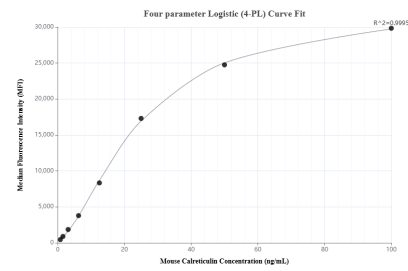
# Selected Validation Data



Sandwich ELISA standard curve of MP01992-1, Mouse Calreticulin Recombinant Matched Antibody Pair - PBS only. 85593-4-PBS was coated to a plate as the capture antibody and incubated with serial dilutions of standard Eg3005. 85593-3-PBS was HRP conjugated as the detection antibody. Range: 39.1-2500 pg/mL



The mean Calreticulin concentration was determined to be 3,567.8 ng/mL in NIH/3T3 cell extract based on a 1.5 mg/mL extract load.



Cytometric bead array standard curve of MP01992-1, Mouse Calreticulin Recombinant Matched Antibody Pair, PBS Only. Capture antibody: 85593-4-PBS. Detection antibody: 85593-3-PBS. Standard: Eg3005. Range: 0.781-100 ng/mL