

For Research Use Only

RIOK3 Recombinant antibody, PBS Only (Capture)

Catalog Number: 85449-3-PBS



Basic Information

Catalog Number:

85449-3-PBS

Concentration:

1 mg/ml

Source:

Rabbit

Isotype:

IgG

Immunogen Catalog Number:

AG4497

GenBank Accession Number:

BC039729

GeneID (NCBI):

8780

UNIPROT ID:

O14730

Full Name:

RIO kinase 3 (yeast)

Calculated MW:

516 aa, 60 kDa

Purification Method:

Protein A purification

CloneNo.:

242996F11

Applications

Tested Applications:

Cytometric bead array, Sandwich ELISA, Indirect ELISA, Sample test

Species Specificity:

human

Background Information

Storage

Storage:

Store at -80°C.

The product is shipped with ice packs. Upon receipt, store it immediately at -80°C

Storage Buffer:

PBS only, pH7.3

For technical support and original validation data for this product please contact:

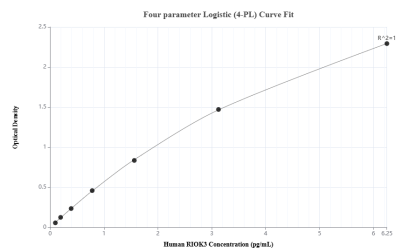
T: 4006900926

E: Proteintech-CN@ptglab.com

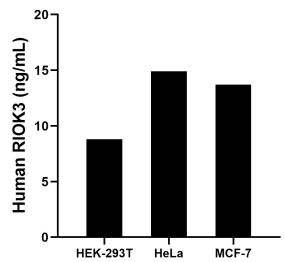
W: ptgcn.com

This product is exclusively available under Proteintech Group brand and is not available to purchase from any other manufacturer.

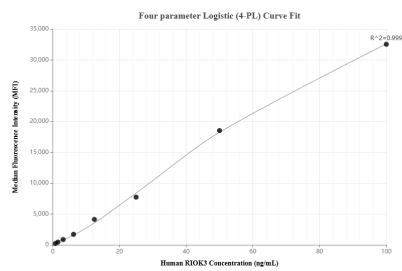
Selected Validation Data



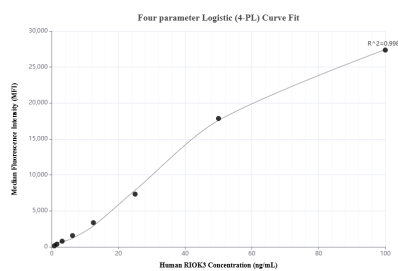
Sandwich ELISA standard curve of MP01940-2, Human R1OK3 Recombinant Matched Antibody Pair - PBS only. 85449-3-PBS was coated to a plate as the capture antibody and incubated with serial dilutions of standard Ag4497. 85449-2-PBS was HRP conjugated as the detection antibody. Range: 97.7-6250 pg/mL



The mean R1OK3 concentration was determined to be 8.12 ng/mL in HEK-293T cell extract based on a 3.2 mg/mL extract load, 14.92 ng/mL in HeLa cell extract based on a 2.1 mg/mL extract load and 13.7 ng/mL in MCF-7 cell extract based on a 1.3 mg/mL extract load.



Cytometric bead array standard curve of MP01940-1, R1OK3 Recombinant Matched Antibody Pair, PBS Only. Capture antibody: 85449-3-PBS. Detection antibody: 85449-1-PBS. Standard: Ag4497. Range: 0.781-100 ng/mL



Cytometric bead array standard curve of MP01940-2, R1OK3 Recombinant Matched Antibody Pair, PBS Only. Capture antibody: 85449-3-PBS. Detection antibody: 85449-2-PBS. Standard: Ag4497. Range: 0.781-100 ng/mL