

For Research Use Only

# HPGDS Recombinant antibody, PBS Only (Capture/Detector)

Catalog Number: 85446-1-PBS



## Basic Information

Catalog Number:

85446-1-PBS

Concentration:

1 mg/ml

Source:

Rabbit

Isotype:

IgG

Immunogen Catalog Number:

AG18290

GenBank Accession Number:

BC020734

GeneID (NCBI):

27306

UNIPROT ID:

O60760

Full Name:

prostaglandin D2 synthase,  
hematopoietic

Calculated MW:

199 aa, 23 kDa

Purification Method:

Protein A purification

CloneNo.:

242980A5

## Applications

Tested Applications:

Cytometric bead array, Sandwich ELISA, Indirect ELISA,  
Sample test

Species Specificity:

human

## Background Information

### Storage

Storage:

Store at -80°C.

**The product is shipped with ice packs. Upon receipt, store it immediately at -80°C**

Storage Buffer:

PBS only, pH7.3

For technical support and original validation data for this product please contact:

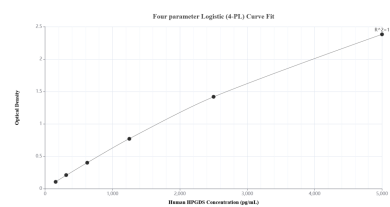
T: 4006900926

E: [Proteintech-CN@ptglab.com](mailto:Proteintech-CN@ptglab.com)

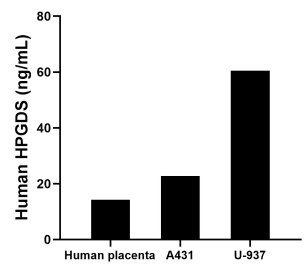
W: [ptgcn.com](http://ptgcn.com)

**This product is exclusively available under Proteintech Group brand and is not available to purchase from any other manufacturer.**

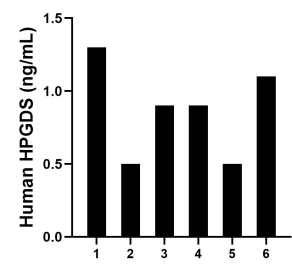
## Selected Validation Data



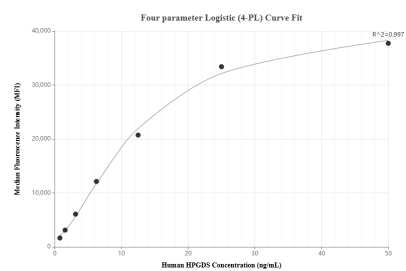
Sandwich ELISA standard curve of MP02001-3, Human HPGDS Recombinant Matched Antibody Pair - PBS only. 85446-1-PBS was coated to a plate as the capture antibody and incubated with serial dilutions of standard Ag18290. 85446-4-PBS was HRP conjugated as the detection antibody. Range: 156-5000 pg/mL



The mean HPGDS concentration was determined to be 14.2 ng/mL in human placenta extract based on a 1.3 mg/mL extract load, 22.7 ng/mL in A431 cell extract based on a 3.7 mg/mL extract load and 60.5 ng/mL in U-937 cell extract based on a 2.2 mg/mL extract load.



Serum of six individual healthy human donors was measured. The HPGDS concentration of detected samples was determined to be 0.9 ng/mL with a range of 0.5-1.3 ng/mL.



Cytometric bead array standard curve of MP02001-1, HPGDS Recombinant Matched Antibody Pair, PBS Only. Capture antibody: 85446-4-PBS. Detection antibody: 85446-1-PBS. Standard: Ag18290. Range: 0.781-50 ng/mL