

For Research Use Only

PPA1 Recombinant antibody, PBS Only (Capture/Detector)

Catalog Number: 85445-2-PBS



Basic Information

Catalog Number:	85445-2-PBS	GenBank Accession Number:	BC001022	Purification Method:	Protein A purification
Concentration:	1 mg/ml	GeneID (NCBI):	5464	CloneNo.:	242963H8
Source:	Rabbit	UNIPROT ID:	Q15181		
Isotype:	IgG	Full Name:	pyrophosphatase (inorganic) 1		
Immunogen Catalog Number:	AG6969	Calculated MW:	33 kDa		

Applications

Tested Applications:
IF/ICC, Cytometric bead array, Sandwich ELISA,
Indirect ELISA, Sample test

Species Specificity:
human

Background Information

Storage

Storage:
Store at -80°C.
The product is shipped with ice packs. Upon receipt, store it immediately at -80°C

Storage Buffer:
PBS Only

For technical support and original validation data for this product please contact:

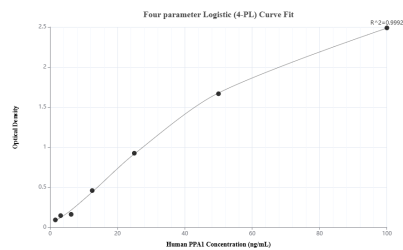
T: 4006900926

E: Proteintech-CN@ptglab.com

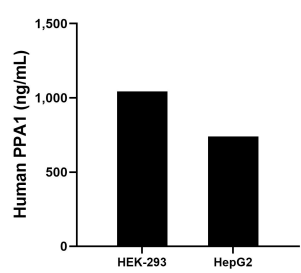
W: ptgcn.com

This product is exclusively available under Proteintech Group brand and is not available to purchase from any other manufacturer.

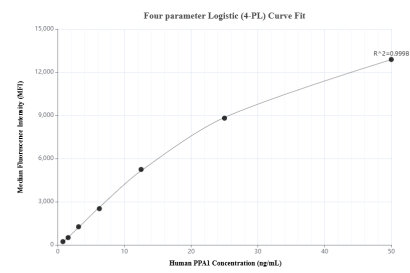
Selected Validation Data



Sandwich ELISA standard curve of MP01999-2, Human PPA1 Recombinant Matched Antibody Pair - PBS only. 85445-1-PBS was coated to a plate as the capture antibody and incubated with serial dilutions of standard Ag6969. 85445-2-PBS was HRP conjugated as the detection antibody. Range: 1.56-100 ng/mL



The mean PPA1 concentration was determined to be 1,041.72 ng/mL in HEK-293 cell extract based on a 2.2 mg/mL extract load and 739.41 ng/mL in HepG2 cell extract based on a 1.8 mg/mL extract load.



Cytometric bead array standard curve of MP01999-1, PPA1 Recombinant Matched Antibody Pair, PBS Only. Capture antibody: 85445-2-PBS. Detection antibody: 85445-1-PBS. Standard: Ag6969. Range: 0.781-50 ng/mL