

For Research Use Only

# PPA1 Recombinant antibody, PBS Only (Capture/Detector)

Catalog Number: 85445-1-PBS



## Basic Information

Catalog Number:

85445-1-PBS

Concentration:

1 mg/ml

Source:

Rabbit

Isotype:

IgG

Immunogen Catalog Number:

AG6969

GenBank Accession Number:

BC001022

GeneID (NCBI):

5464

UNIPROT ID:

Q15181

Full Name:

pyrophosphatase (inorganic) 1

Calculated MW:

33 kDa

Purification Method:

Protein A purification

CloneNo.:

242963E11

## Applications

Tested Applications:

Cytometric bead array, Sandwich ELISA, Indirect ELISA,  
Sample test

Species Specificity:

human

## Background Information

### Storage

Storage:

Store at -80°C.

**The product is shipped with ice packs. Upon receipt, store it immediately at -80°C**

Storage Buffer:

PBS Only

For technical support and original validation data for this product please contact:

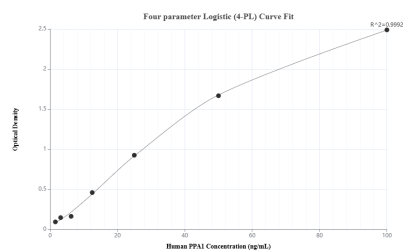
T: 4006900926

E: [Proteintech-CN@ptglab.com](mailto:Proteintech-CN@ptglab.com)

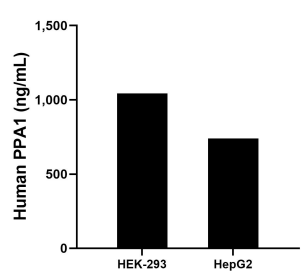
W: [ptgcn.com](http://ptgcn.com)

**This product is exclusively available under Proteintech Group brand and is not available to purchase from any other manufacturer.**

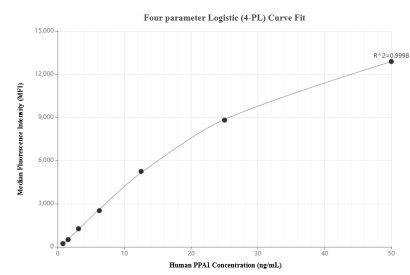
## Selected Validation Data



Sandwich ELISA standard curve of MP01999-2, Human PPA1 Recombinant Matched Antibody Pair - PBS only. 85445-1-PBS was coated to a plate as the capture antibody and incubated with serial dilutions of standard Ag6969. 85445-2-PBS was HRP conjugated as the detection antibody. Range: 1.56-100 ng/mL



The mean PPA1 concentration was determined to be 1,041.72 ng/mL in HEK-293 cell extract based on a 2.2 mg/mL extract load and 739.41 ng/mL in HepG2 cell extract based on a 1.8 mg/mL extract load.



Cytometric bead array standard curve of MP01999-1, PPA1 Recombinant Matched Antibody Pair, PBS Only. Capture antibody: 85445-2-PBS. Detection antibody: 85445-1-PBS. Standard: Ag6969. Range: 0.781-50 ng/mL