

For Research Use Only

PFKFB4 Recombinant antibody, PBS Only (Capture)

Catalog Number: 85444-3-PBS



Basic Information

Catalog Number:

85444-3-PBS

Concentration:

1 mg/ml

Source:

Rabbit

Isotype:

IgG

Immunogen Catalog Number:

AG30571

GenBank Accession Number:

NM_001317134

GeneID (NCBI):

5210

UNIPROT ID:

Q16877

Full Name:

6-phosphofructo-2-kinase/fructose-
2,6-biphosphatase 4

Calculated MW:

54 kDa

Observed MW:

54 kDa

Purification Method:

Protein A purification

CloneNo.:

242962H8

Applications

Tested Applications:

WB, Cytometric bead array, Sandwich ELISA, Indirect
ELISA, Sample test

Species Specificity:

human

Background Information

Storage

Storage:

Store at -80°C.

The product is shipped with ice packs. Upon receipt, store it immediately at -80°C

Storage Buffer:

PBS only, pH7.3

For technical support and original validation data for this product please contact:

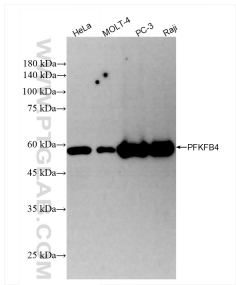
T: 4006900926

E: Proteintech-CN@ptglab.com

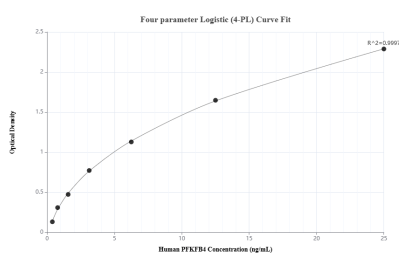
W: ptgcn.com

This product is exclusively available under Proteintech Group brand and is not available to purchase from any other manufacturer.

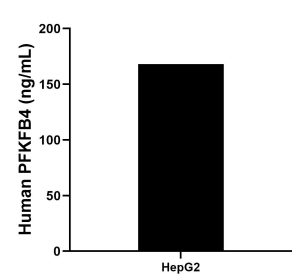
Selected Validation Data



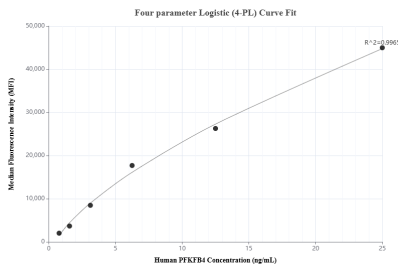
Various lysates were subjected to SDS PAGE followed by western blot with 85444-3-RR (PFKFB4 antibody) at dilution of 1:2000 incubated at room temperature for 1.5 hours. This data was developed using the same antibody clone with 85444-3-PBS in a different storage buffer formulation.



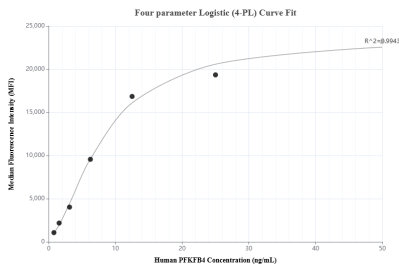
Sandwich ELISA standard curve of MP01998-1, Human PFKFB4 Recombinant Matched Antibody Pair - PBS only. 85444-3-PBS was coated to a plate as the capture antibody and incubated with serial dilutions of standard Ag30571. 85444-2-PBS was HRP conjugated as the detection antibody. Range: 0.781-25 ng/mL



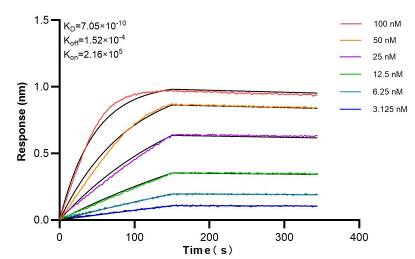
The mean PFKFB4 concentration was determined to be 167.95 ng/mL in HepG2 cell extract based on a 1.8 mg/mL extract load.



Cytometric bead array standard curve of MP01998-1, PFKFB4 Recombinant Matched Antibody Pair, PBS Only. Capture antibody: 85444-3-PBS. Detection antibody: 85444-2-PBS. Standard: Ag30571. Range: 0.781-25 ng/mL



Cytometric bead array standard curve of MP01998-2, PFKFB4 Recombinant Matched Antibody Pair, PBS Only. Capture antibody: 85444-3-PBS. Detection antibody: 85444-1-PBS. Standard: Ag30571. Range: 0.781-50 ng/mL



Bilayer interferometry (BLI) kinetic assays of 85444-3-RR against Human PFKFB4 were performed. The affinity constant is 0.705 nM.