

For Research Use Only

PFKFB4 Recombinant antibody, PBS Only (Detector)

Catalog Number: 85444-2-PBS



Basic Information

Catalog Number:

85444-2-PBS

Concentration:

1 mg/ml

Source:

Rabbit

Isotype:

IgG

Immunogen Catalog Number:

AG30571

GenBank Accession Number:

NM_001317134

GeneID (NCBI):

5210

UNIPROT ID:

Q16877

Full Name:

6-phosphofructo-2-kinase/fructose-2,6-bisphosphatase 4

Calculated MW:

54 kDa

Purification Method:

Protein A purification

CloneNo.:

242962H1

Applications

Tested Applications:

Cytometric bead array, Sandwich ELISA, Indirect ELISA, Sample test

Species Specificity:

human

Background Information

Storage

Storage:

Store at -80°C.

The product is shipped with ice packs. Upon receipt, store it immediately at -80°C

Storage Buffer:

PBS only, pH7.3

For technical support and original validation data for this product please contact:

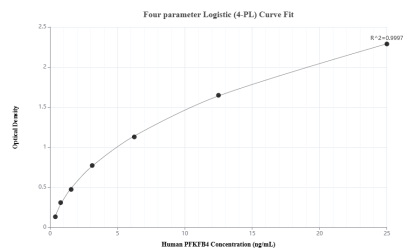
T: 4006900926

E: Proteintech-CN@ptglab.com

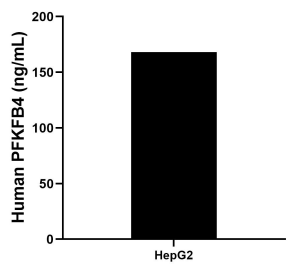
W: ptgcn.com

This product is exclusively available under Proteintech Group brand and is not available to purchase from any other manufacturer.

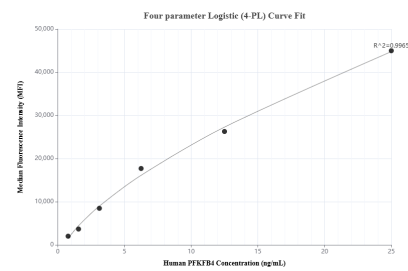
Selected Validation Data



Sandwich ELISA standard curve of MP01998-1, Human PFKFB4 Recombinant Matched Antibody Pair - PBS only. 85444-3-PBS was coated to a plate as the capture antibody and incubated with serial dilutions of standard Ag30571. 85444-2-PBS was HRP conjugated as the detection antibody. Range: 0.781-25 ng/mL



The mean PFKFB4 concentration was determined to be 167.95 ng/mL in HepG2 cell extract based on a 1.8 mg/mL extract load.



Cytometric bead array standard curve of MP01998-1, PFKFB4 Recombinant Matched Antibody Pair, PBS Only. Capture antibody: 85444-3-PBS. Detection antibody: 85444-2-PBS. Standard: Ag30571. Range: 0.781-25 ng/mL