

For Research Use Only

# CTR9 Recombinant antibody, PBS Only (Capture)

Catalog Number: 85432-2-PBS



## Basic Information

Catalog Number:

85432-2-PBS

Concentration:

1 mg/ml

Source:

Rabbit

Isotype:

IgG

Immunogen Catalog Number:

AG15690

GenBank Accession Number:

BC058914

GeneID (NCBI):

9646

UNIPROT ID:

Q6PD62

Full Name:

Ctr9, Paf1/RNA polymerase II complex component, homolog (S. cerevisiae)

Calculated MW:

1173 aa, 134 kDa

Purification Method:

Protein A purification

CloneNo.:

242949D8

## Applications

Tested Applications:

Cytometric bead array, Sandwich ELISA, Indirect ELISA, Sample test

Species Specificity:

human

## Background Information

### Storage

Storage:

Store at -80°C.

The product is shipped with ice packs. Upon receipt, store it immediately at -80°C

Storage Buffer:

PBS only, pH7.3

For technical support and original validation data for this product please contact:

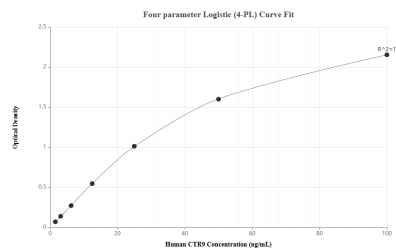
T: 4006900926

E: [Proteintech-CN@ptglab.com](mailto:Proteintech-CN@ptglab.com)

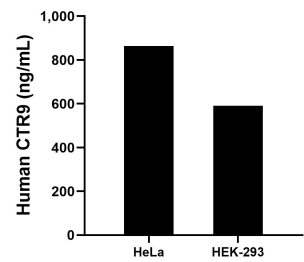
W: [ptgcn.com](http://ptgcn.com)

This product is exclusively available under Proteintech Group brand and is not available to purchase from any other manufacturer.

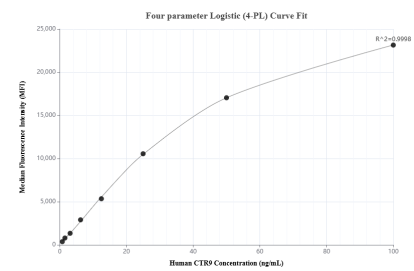
## Selected Validation Data



Sandwich ELISA standard curve of MP01950-1, Human CTR9 Recombinant Matched Antibody Pair - PBS only. 85432-2-PBS was coated to a plate as the capture antibody and incubated with serial dilutions of standard Ag15690. 85432-1-PBS was HRP conjugated as the detection antibody. Range: 1.56-100 ng/mL



The mean CTR9 concentration was determined to be 864.35 ng/mL in HeLa cell extract based on a 4.5 mg/mL extract load and 590.41 ng/mL in HEK-293 cell extract based on a 2.1 mg/mL extract load.



Cytometric bead array standard curve of MP01950-1, CTR9 Recombinant Matched Antibody Pair, PBS Only. Capture antibody: 85432-2-PBS. Detection antibody: 85432-1-PBS. Standard: Ag15690. Range: 0.781-100 ng/mL