

For Research Use Only

ALDH1B1 Recombinant antibody

Catalog Number: 85426-4-RR



Basic Information

Catalog Number:

85426-4-RR

Concentration:

1000 µg/ml

Source:

Rabbit

Isotype:

IgG

Immunogen Catalog Number:

AG7144

GenBank Accession Number:

BC001619

GeneID (NCBI):

219

UNIPROT ID:

P30837

Full Name:

aldehyde dehydrogenase 1 family,
member B1

Calculated MW:

57 kDa

Observed MW:

55 kDa

Purification Method:

Protein A purification

CloneNo.:

242944D1

Recommended Dilutions:

WB 1:5000-1:50000

Applications

Tested Applications:

WB, ELISA

Species Specificity:

human, mouse, rat

Positive Controls:

WB : K-562 cells, HepG2 cells, HL-60 cells, mouse brain
tissue, rat brain tissue, human testis tissue

Background Information

Aldehyde dehydrogenases (ALDHs) belong to a superfamily of NAD(P)⁺-dependent enzymes, which catalyze the oxidation of endogenous and exogenous aldehydes to their corresponding acids. ALDH1B1 is a mitochondrial ALDH that it is dramatically upregulated in human colonic adenocarcinoma, making it a potential biomarker for human colon cancer.(PMID:21216231). ALDH1B1 is a homotetramer expressed in various adult and fetal human tissues including liver, testis, kidney, skeletal muscle, heart, placenta, brain and lung(PMID:18611112). This antibody is specific to ALDH1B1.

Storage

Storage:

Store at -20°C. Stable for one year after shipment.

Storage Buffer:

PBS with 0.02% sodium azide and 50% glycerol pH 7.3.

Aliquoting is unnecessary for -20°C storage

For technical support and original validation data for this product please contact:

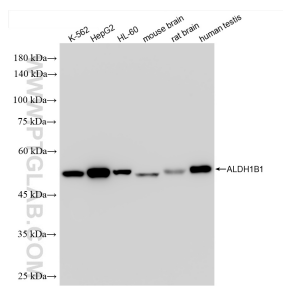
T: 4006900926

E: Proteintech-CN@ptglab.com

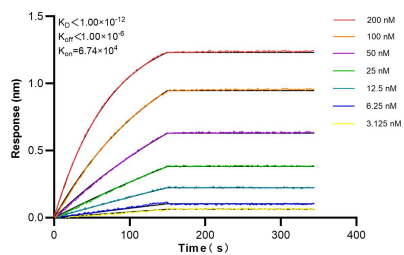
W: ptgcn.com

This product is exclusively available under Proteintech Group brand and is not available to purchase from any other manufacturer.

Selected Validation Data



Various lysates were subjected to SDS PAGE followed by western blot with 85426-4-RR (ALDH1B1 antibody) at dilution of 1:10000 incubated at room temperature for 1.5 hours.



Biolayer interferometry (BLI) kinetic assays of 85426-4-RR against Human ALDH1B1 were performed. The affinity constant is below 1 pM.