

For Research Use Only

# TRAILR4/TNFRSF10D Recombinant antibody, PBS Only (Capture)

Catalog Number: 85425-1-PBS



## Basic Information

Catalog Number:

85425-1-PBS

Concentration:

1 mg/ml

Source:

Rabbit

Isotype:

IgG

GenBank Accession Number:

NM\_003840.5

GeneID (NCBI):

8793

UNIPROT ID:

Q9UBN6

Full Name:

tumor necrosis factor receptor  
superfamily, member 10d, decoy with  
truncated death domain

Calculated MW:

42 kDa

Purification Method:

Protein A purification

CloneNo.:

242916B2

## Applications

Tested Applications:

Cytometric bead array, Sandwich ELISA, Indirect ELISA,  
Sample test

Species Specificity:

human

## Background Information

### Storage

Storage:

Store at -80°C.

The product is shipped with ice packs. Upon receipt, store it immediately at -80°C

Storage Buffer:

PBS Only

For technical support and original validation data for this product please contact:

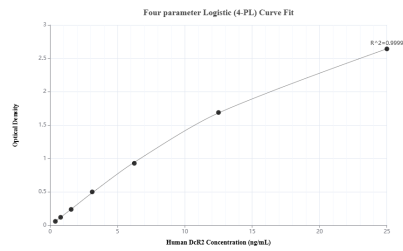
T: 4006900926

E: [Proteintech-CN@ptglab.com](mailto:Proteintech-CN@ptglab.com)

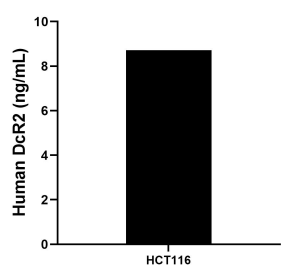
W: [ptgcn.com](http://ptgcn.com)

This product is exclusively available under Proteintech Group brand and is not available to purchase from any other manufacturer.

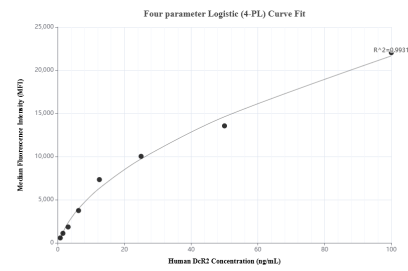
# Selected Validation Data



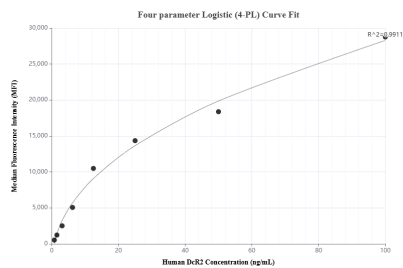
Sandwich ELISA standard curve of MP01996-1, Human DcR2 Recombinant Matched Antibody Pair - PBS only. 85425-1-PBS was coated to a plate as the capture antibody and incubated with serial dilutions of standard Eg3487. 85425-2-PBS was HRP conjugated as the detection antibody. Range: 0.391-25 ng/mL



The mean DcR2 concentration was determined to be 8.72 ng/mL in HCT116 cell extract based on a 1.4 mg/mL extract load.



Cytometric bead array standard curve of MP01996-2, DcR2 Recombinant Matched Antibody Pair, PBS Only. Capture antibody: 85425-1-PBS. Detection antibody: 85425-3-PBS. Standard: Eg3487. Range: 0.781-100 ng/mL



Cytometric bead array standard curve of MP01996-1, DcR2 Recombinant Matched Antibody Pair, PBS Only. Capture antibody: 85425-1-PBS. Detection antibody: 85425-2-PBS. Standard: Eg3487. Range: 0.781-100 ng/mL