

For Research Use Only

Cytokeratin 6B Recombinant antibody

Catalog Number: 85423-2-RR



Basic Information

Catalog Number:

85423-2-RR

Concentration:

1000 µg/ml

Source:

Rabbit

Isotype:

IgG

Immunogen Catalog Number:

AG11288

GenBank Accession Number:

BC034535

GeneID (NCBI):

3854

UNIPROT ID:

P04259

Full Name:

keratin 6B

Calculated MW:

564 aa, 60 kDa

Observed MW:

60 kDa

Purification Method:

Protein A purification

CloneNo.:

242874F9

Recommended Dilutions:

WB 1:5000-1:50000

Applications

Tested Applications:

WB, ELISA

Species Specificity:

human, mouse, rat

Positive Controls:

WB : A431 cells,

Background Information

Cytokeratin 6B (CK6B) is a type of intermediate filament protein primarily expressed in certain epithelial cells. Cytokeratin 6B consists of a central α -helical rod domain flanked by non-helical head and tail domains, which is a common structural feature of cytokeratins. CK6B is mainly expressed in the basal and suprabasal layers of stratified epithelia, such as the oral mucosa, esophagus, and conjunctiva. It is also found in some specialized epithelial cells like the hair follicle outer root sheath and the nail matrix. CK6B can serve as a diagnostic marker for certain pathological conditions. Its expression pattern can be used to distinguish between different types of epithelial tumors or to identify specific epithelial cell populations in histopathological studies.

Storage

Storage:

Store at -20°C. Stable for one year after shipment.

Storage Buffer:

PBS with 0.02% sodium azide and 50% glycerol pH 7.3.

Aliquoting is unnecessary for -20°C storage

For technical support and original validation data for this product please contact:

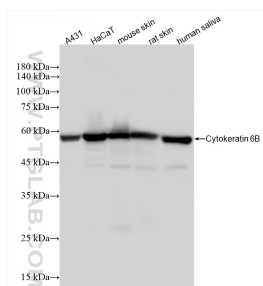
T: 4006900926

E: Proteintech-CN@ptglab.com

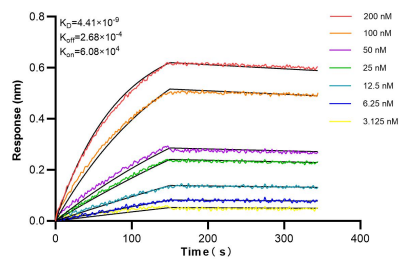
W: ptgcn.com

This product is exclusively available under Proteintech Group brand and is not available to purchase from any other manufacturer.

Selected Validation Data



Various lysates were subjected to SDS PAGE followed by western blot with 85423-2-RR (KRT6B antibody) at dilution of 1:10000 incubated at room temperature for 1.5 hours.



Biolayer interferometry (BLI) kinetic assays of 85423-2-RR against Human Cytokeratin 6B were performed. The affinity constant is 4.41 nM.