

For Research Use Only

# DNA ligase III/LIG3 Recombinant antibody, PBS Only (Detector)

Catalog Number: 85409-1-PBS



## Basic Information

Catalog Number:

85409-1-PBS

Concentration:

1 mg/ml

Source:

Rabbit

Isotype:

IgG

Immunogen Catalog Number:

AG24917

GenBank Accession Number:

BC068005

GeneID (NCBI):

3980

UNIPROT ID:

P49916

Full Name:

ligase III, DNA, ATP-dependent

Calculated MW:

100-110 kDa

Purification Method:

Protein A purification

CloneNo.:

242870E11

## Applications

Tested Applications:

Cytometric bead array, Sandwich ELISA, Indirect ELISA, Sample test

Species Specificity:

human

## Background Information

### Storage

Storage:

Store at -80°C.

The product is shipped with ice packs. Upon receipt, store it immediately at -80°C

Storage Buffer:

PBS Only

For technical support and original validation data for this product please contact:

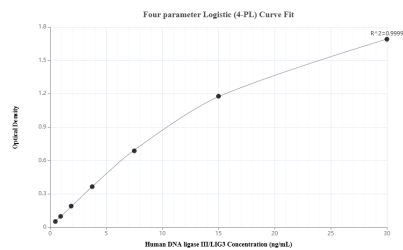
T: 4006900926

E: [Proteintech-CN@ptglab.com](mailto:Proteintech-CN@ptglab.com)

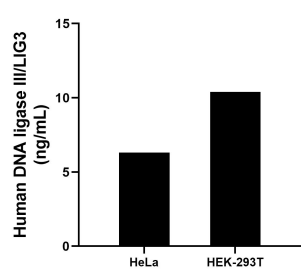
W: [ptgcn.com](http://ptgcn.com)

This product is exclusively available under Proteintech Group brand and is not available to purchase from any other manufacturer.

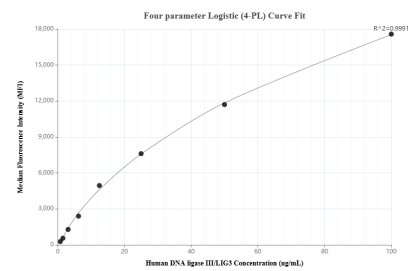
## Selected Validation Data



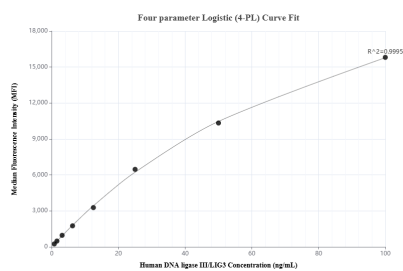
Sandwich ELISA standard curve of MP01953-3, Human DNA ligase III/LIG3 Recombinant Matched Antibody Pair - PBS only. 85409-5-PBS was coated to a plate as the capture antibody and incubated with serial dilutions of standard Ag24917. 85409-1-PBS was HRP conjugated as the detection antibody. Range: 0.47-30 ng/mL



The mean DNA ligase III/LIG3 concentration was determined to be 6.31 ng/mL in HeLa cell extract based on a 2.1 mg/mL extract load and 10.39 ng/mL in HEK-293T cell extract based on a 2.8 mg/mL extract load.



Cytometric bead array standard curve of MP01953-1, DNA ligase III/LIG3 Recombinant Matched Antibody Pair, PBS Only. Capture antibody: 85409-2-PBS. Detection antibody: 85409-1-PBS. Standard: Ag24917. Range: 0.781-100 ng/mL



Cytometric bead array standard curve of MP01953-2, DNA ligase III/LIG3 Recombinant Matched Antibody Pair, PBS Only. Capture antibody: 85409-3-PBS. Detection antibody: 85409-1-PBS. Standard: Ag24917. Range: 0.781-100 ng/mL