

For Research Use Only

# AQP2 Recombinant antibody, PBS Only (Capture)

Catalog Number: 85402-1-PBS



## Basic Information

Catalog Number:	85402-1-PBS	GenBank Accession Number:	NM_000486	Purification Method:	Protein A purification
Concentration:	1 mg/ml	GeneID (NCBI):	359	CloneNo.:	242886B8
Source:	Rabbit	UNIPROT ID:	P41181		
Isotype:	IgG	Full Name:	aquaporin 2 (collecting duct)		
Immunogen Catalog Number:	AG29931	Calculated MW:	29 kDa		
		Observed MW:	28-29, 35-38 kDa		

## Applications

**Tested Applications:**  
WB, Cytometric bead array, Indirect ELISA

**Species Specificity:**  
human, mouse

## Background Information

AQP2 (Aquaporin2) is a water channel protein that is widely distributed among mammalian tissues and plays a major role in water homeostasis. AQP2 is mainly found in the apical cell membranes of the kidney's collecting duct cells and is critical for urinary concentration. AQP2 can be glycosylated and this antibody recognizes the 28-29 kDa non-glycosylated as well as the 35-40 kDa glycosylated forms of AQP2.

## Storage

**Storage:**  
Store at -80°C.  
**The product is shipped with ice packs. Upon receipt, store it immediately at -80°C**

**Storage Buffer:**  
PBS only, pH7.3

For technical support and original validation data for this product please contact:

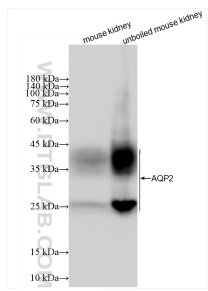
T: 4006900926

E: Proteintech-CN@ptglab.com

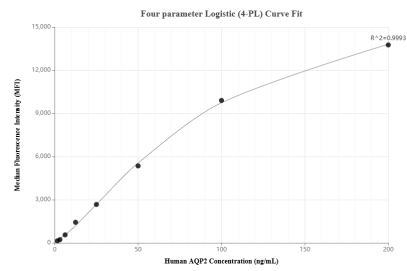
W: ptgcn.com

**This product is exclusively available under Proteintech Group brand and is not available to purchase from any other manufacturer.**

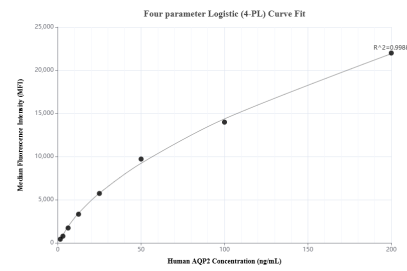
Selected Validation Data



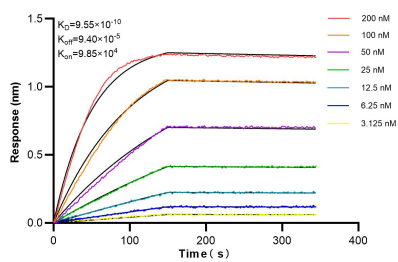
mouse kidney tissue were subjected to SDS PAGE followed by western blot with 85402-1-RR (AQP2 antibody) at dilution of 1:50000 incubated at room temperature for 1.5 hours. This data was developed using the same antibody clone with 85402-1-PBS in a different storage buffer formulation.



Cytometric bead array standard curve of MP01925-2, AQP2 Recombinant Matched Antibody Pair, PBS Only. Capture antibody: 85402-1-PBS. Detection antibody: 85402-3-PBS. Standard: Ag29931. Range: 1.563-200 ng/mL



Cytometric bead array standard curve of MP01925-1, AQP2 Recombinant Matched Antibody Pair, PBS Only. Capture antibody: 85402-1-PBS. Detection antibody: 85402-2-PBS. Standard: Ag29931. Range: 1.563-200 ng/mL



Biolayer interferometry (BLI) kinetic assays of 85402-1-RR against Human AQP2 were performed. The affinity constant is 0.955 nM.