

For Research Use Only

# CLYBL Recombinant antibody, PBS Only

Catalog Number: 85399-4-PBS



## Basic Information

<b>Catalog Number:</b> 85399-4-PBS	<b>GenBank Accession Number:</b> BC034360	<b>Purification Method:</b> Protein A purification
<b>Concentration:</b> 1000 µg/ml	<b>GeneID (NCBI):</b> 171425	<b>CloneNo.:</b> 242785F10
<b>Source:</b> Rabbit	<b>UNIPROT ID:</b> Q8NOX4	
<b>Isotype:</b> IgG	<b>Full Name:</b> citrate lyase beta like	
<b>Immunogen Catalog Number:</b> AG11283	<b>Calculated MW:</b> 340 aa, 37 kDa	
	<b>Observed MW:</b> 30-40 kDa	

## Applications

**Tested Applications:**  
WB, Indirect ELISA

**Species Specificity:**  
human, mouse, rat

## Background Information

CLYBL, also named CLB, is a Mitochondrial citramalyl-CoA lyase indirectly involved in vitamin B12 metabolism (PubMed:29056341). It is a human mitochondrial enzyme of unknown function that is found in multiple eukaryotic taxa and conserved to bacteria. It acts as a beta-methylmalate synthase in vitro, by mediating the conversion of glyoxylate and propionyl-CoA to beta-methylmalate. There are two isoforms with MW 31-33 kDa and 35-37 kDa.

## Storage

**Storage:**  
Store at -80°C.  
**The product is shipped with ice packs. Upon receipt, store it immediately at -80°C**

**Storage Buffer:**  
PBS only, pH7.3

For technical support and original validation data for this product please contact:

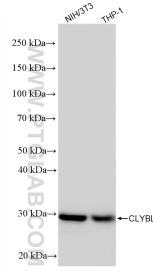
T: 4006900926

E: [Proteintech-CN@ptglab.com](mailto:Proteintech-CN@ptglab.com)

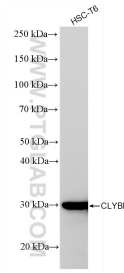
W: [ptgcn.com](http://ptgcn.com)

**This product is exclusively available under Proteintech Group brand and is not available to purchase from any other manufacturer.**

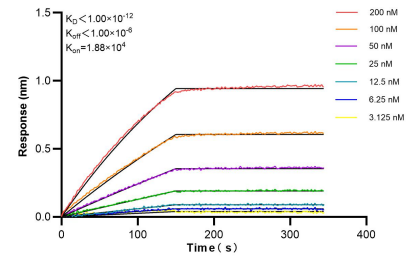
## Selected Validation Data



Various lysates were subjected to SDS PAGE followed by western blot with 85399-4-RR (CLYBL antibody) at dilution of 1:10000 incubated at room temperature for 1.5 hours. This data was developed using the same antibody clone with 85399-4-PBS in a different storage buffer formulation.



HSC-T6 cells were subjected to SDS PAGE followed by western blot with 85399-4-RR (CLYBL antibody) at dilution of 1:10000 incubated at room temperature for 1.5 hours. This data was developed using the same antibody clone with 85399-4-PBS in a different storage buffer formulation.



Bi-layer interferometry (BLI) kinetic assays of 85399-4-RR against Human CLYBL were performed. The affinity constant is below 1 pM.