

For Research Use Only

# CLYBL Recombinant antibody, PBS Only (Detector)

Catalog Number: 85399-3-PBS



## Basic Information

Catalog Number:

85399-3-PBS

Concentration:

1 mg/ml

Source:

Rabbit

Isotype:

IgG

Immunogen Catalog Number:

AG11283

GenBank Accession Number:

BC034360

GeneID (NCBI):

171425

UNIPROT ID:

Q8NOX4

Full Name:

citrate lyase beta like

Calculated MW:

340 aa, 37 kDa

Purification Method:

Protein A purification

CloneNo.:

242785G1

## Applications

Tested Applications:

Cytometric bead array, Sandwich ELISA, Indirect ELISA,  
Sample test

Species Specificity:

human

## Background Information

### Storage

Storage:

Store at -80°C.

The product is shipped with ice packs. Upon receipt, store it immediately at -80°C

Storage Buffer:

PBS Only

For technical support and original validation data for this product please contact:

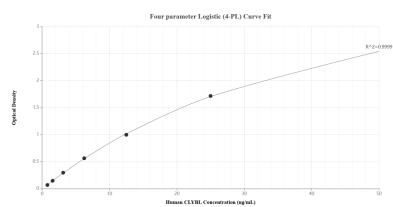
T: 4006900926

E: [Proteintech-CN@ptglab.com](mailto:Proteintech-CN@ptglab.com)

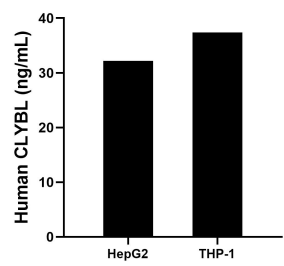
W: [ptgcn.com](http://ptgcn.com)

This product is exclusively available under Proteintech Group brand and is not available to purchase from any other manufacturer.

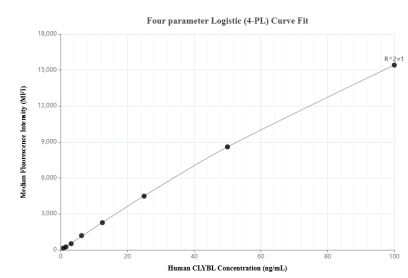
## Selected Validation Data



Sandwich ELISA standard curve of MP01930-3, Human CLYBL Recombinant Matched Antibody Pair - PBS only. 85399-5-PBS was coated to a plate as the capture antibody and incubated with serial dilutions of standard Ag11283. 85399-3-PBS was HRP conjugated as the detection antibody. Range: 0.781-50 ng/mL.



The mean CLYBL concentration was determined to be 32.18 ng/mL in HepG2 cell extract based on a 1.80 mg/mL extract load and 37.35 ng/mL in THP-1 cell extract based on a 1.50 mg/mL extract load.



Cytometric bead array standard curve of MP01930-1, CLYBL Recombinant Matched Antibody Pair, PBS Only. Capture antibody: 85399-1-PBS. Detection antibody: 85399-3-PBS. Standard: Ag11283. Range: 0.781-100 ng/mL.