

For Research Use Only

PSIP1 Recombinant antibody, PBS Only

Catalog Number: 85395-1-PBS



Basic Information

Catalog Number:

85395-1-PBS

Concentration:

1 mg/ml

Source:

Rabbit

Isotype:

IgG

Immunogen Catalog Number:

AG21886

GenBank Accession Number:

BC064135

GeneID (NCBI):

11168

UNIPROT ID:

O75475

Full Name:

PC4 and SFRS1 interacting protein 1

Calculated MW:

530 aa, 60 kDa

Observed MW:

75 kDa

Purification Method:

Protein A purification

CloneNo.:

242841C5

Applications

Tested Applications:

WB, IHC, IF/ICC, Indirect ELISA

Species Specificity:

human, mouse, rat

Background Information

PSIP1, also known as PC4 and SRSF1 Interacting Protein 1 or Lens Epithelium-Derived Growth Factor (LEDGF), is a transcriptional coactivator involved in neuroepithelial stem cell differentiation and neurogenesis. It also plays a role in lens epithelial cell gene regulation and stress responses. It is a chromatin-associated protein with histone chaperone activity, involved in transcriptional elongation. PSIP1 may act as an adapter to coordinate pre-mRNA splicing. PSIP1 encodes two protein isoforms with molecular masses of 52 and 75 kDa. p52 and p75 were identified as interacting with transcription factor PC4 and shown to act as transcriptional coactivators.

Storage

Storage:

Store at -80°C.

The product is shipped with ice packs. Upon receipt, store it immediately at -80°C

Storage Buffer:

PBS only

For technical support and original validation data for this product please contact:

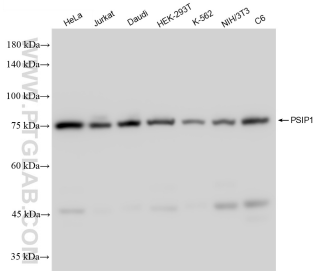
T: 4006900926

E: Proteintech-CN@ptglab.com

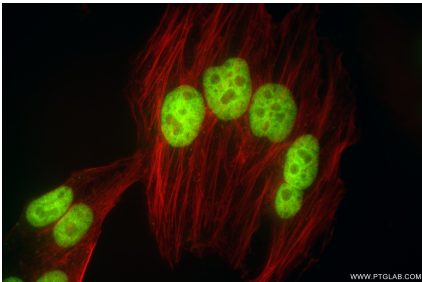
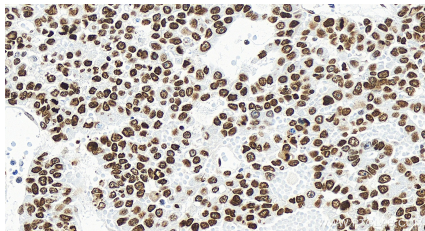
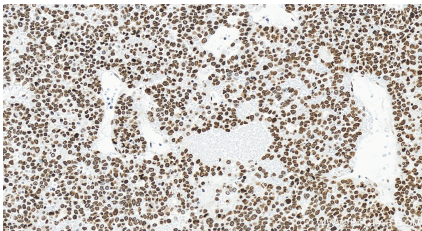
W: ptgcn.com

This product is exclusively available under Proteintech Group brand and is not available to purchase from any other manufacturer.

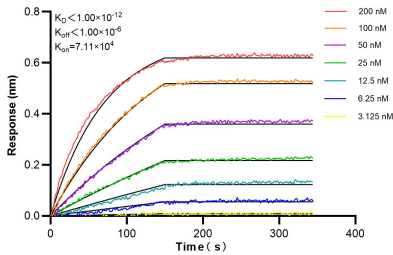
Selected Validation Data



Various lysates were subjected to SDS PAGE followed by western blot with 85395-1-RR (PSIP1 antibody) at dilution of 1:10000 incubated at room temperature for 1.5 hours. This data was developed using the same antibody clone with 85395-1-PBS in a different storage buffer formulation.



Immunofluorescent analysis of (4% PFA) fixed HepG2 cells using PSIP1 antibody (85395-1-RR, Clone: 242841C5) at dilution of 1:500 and CoraLite@488-Conjugated Goat Anti-Rabbit IgG(H+L) (SA00013-2), CL594-Phalloidin (red). This data was developed using the same antibody clone with 85395-1-PBS in a different storage buffer formulation.



Biolayer interferometry (BLI) kinetic assays of 85395-1-RR against Human PSIP1 were performed. The affinity constant is below 1 pM.