

For Research Use Only

# ITM2A Recombinant monoclonal antibody, PBS Only

Catalog Number: 85393-2-PBS



## Basic Information

<b>Catalog Number:</b> 85393-2-PBS	<b>GenBank Accession Number:</b> BC040437	<b>Purification Method:</b> Protein A purification
<b>Source:</b> Rabbit	<b>GeneID (NCBI):</b> 9452	<b>CloneNo.:</b> 242704D7
<b>Isotype:</b> IgG	<b>UNIPROT ID:</b> O43736	
	<b>Full Name:</b> integral membrane protein 2A	
	<b>Calculated MW:</b> 30 kDa	
	<b>Observed MW:</b> 30 kDa	

## Applications

**Tested Applications:**  
WB, Indirect ELISA

**Species Specificity:**  
human, mouse, rat

## Background Information

Integral membrane protein 2A (ITM2A) is a single-pass type II membrane protein belonging to a family, which is composed of at least two other members ITM2B and ITM2C. ITM2A can be induced during thymocyte selection and T cell activation. In early stages of differentiation ITM2A may be associated with an inhibition of the initiation of chondrogenesis.

## Storage

**Storage:**  
Store at -80°C.  
**The product is shipped with ice packs. Upon receipt, store it immediately at -80°C**

**Storage Buffer:**  
PBS only, pH7.3

For technical support and original validation data for this product please contact:

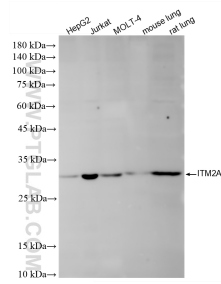
T: 4006900926

E: [Proteintech-CN@ptglab.com](mailto:Proteintech-CN@ptglab.com)

W: [ptgcn.com](http://ptgcn.com)

**This product is exclusively available under Proteintech Group brand and is not available to purchase from any other manufacturer.**

## Selected Validation Data



Various lysates were subjected to SDS PAGE followed by western blot with 85393-2-RR (ITM2A antibody) at dilution of 1:1000 incubated at room temperature for 1.5 hours. This data was developed using the same antibody clone with 85393-2-PBS in a different storage buffer formulation.