

For Research Use Only

# FCER1G Recombinant antibody, PBS Only

Catalog Number: 85390-1-PBS



## Basic Information

Catalog Number: 85390-1-PBS	GenBank Accession Number: BC033872	Purification Method: Protein A purification
Concentration: 1 mg/ml	GeneID (NCBI): 2207	CloneNo.: 242829C5
Source: Rabbit	UNIPROT ID: P30273	
Isotype: IgG	Full Name: Fc fragment of IgE, high affinity I, receptor for; gamma polypeptide	
Immunogen Catalog Number: AG4442	Calculated MW: 87 aa, 10 kDa	

## Applications

Tested Applications:  
IF/ICC, Indirect ELISA

Species Specificity:  
human, mouse

## Background Information

FCER1G (Fc receptor gamma-chain, FcRgamma), also known as Fc-epsilon RI-gamma, or IgE Fc receptor subunit gamma (FceRI gamma), is a component of the high-affinity immunoglobulin E (IgE) receptor (Fc epsilon RI) which is a tetrameric complex of one alpha subunit, one beta subunit, and two disulfide-linked gamma subunits (PMID: 2146219; 2531187). Fc epsilon RI is present exclusively on mast cells and basophils, mediating allergic inflammatory signaling (PMID: 17438574). FCER1G is widely expressed and contains an immunoreceptor tyrosine-based activation motif (ITAM) that transduces activation signals from various immunoreceptors (PMID: 19098920).

## Storage

Storage:  
Store at -80°C.  
**The product is shipped with ice packs. Upon receipt, store it immediately at -80°C**

Storage Buffer:  
PBS only, pH7.3

For technical support and original validation data for this product please contact:

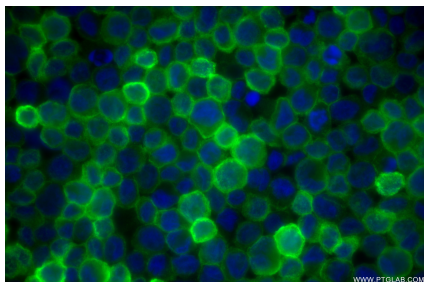
T: 4006900926

E: Proteintech-CN@ptglab.com

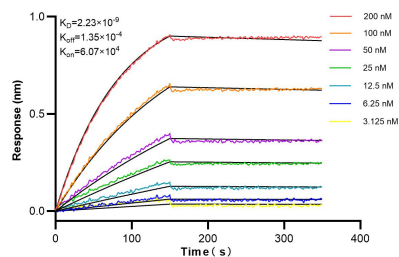
W: ptgcn.com

**This product is exclusively available under Proteintech Group brand and is not available to purchase from any other manufacturer.**

## Selected Validation Data



Immunofluorescent analysis of (4% PFA) fixed THP-1 cells using FCER1G antibody (85390-1-RR, Clone: 242829C5) at dilution of 1:500 and CoraLite®488-Conjugated Goat Anti-Rabbit IgG(H+L) (SA00013-2). This data was developed using the same antibody clone with 85390-1-PBS in a different storage buffer formulation.



Biolayer interferometry (BLI) kinetic assays of 85390-1-RR against Human FCER1G were performed. The affinity constant is 2.23 nM.